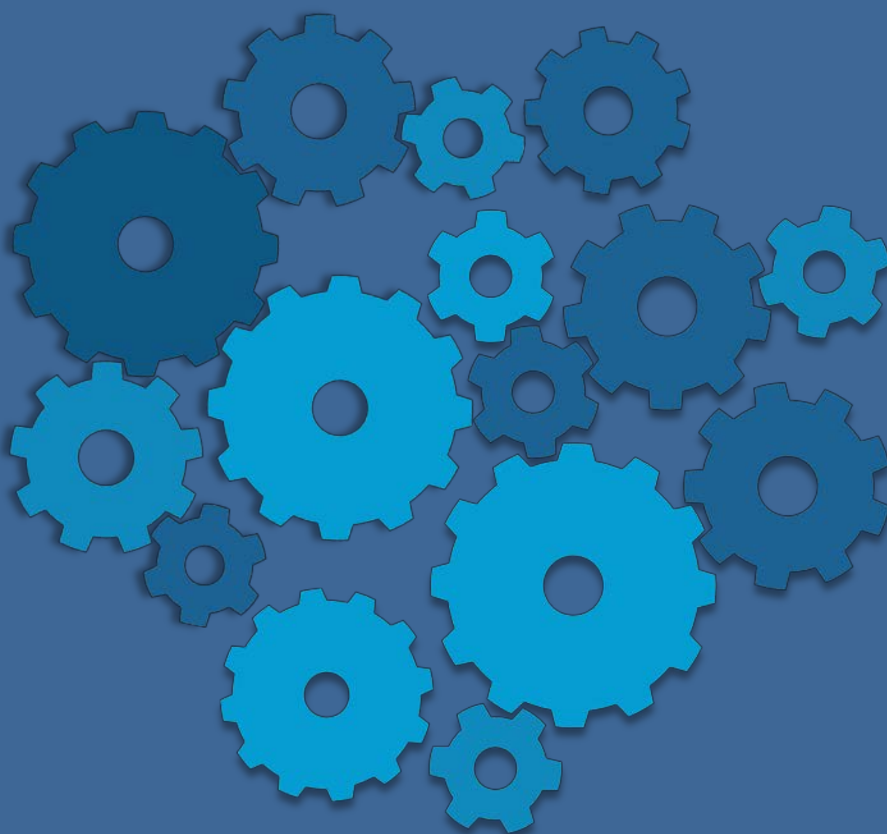


2016 Political Activities and Contributions Report

April 2017



Prudential
Bring Your ChallengesSM

Contents

<u>Section</u>	<u>Page</u>
A Note from the PAC Treasurer	3
Summary of Prudential Policies and Procedures for Political Activity	4
Prudential PAC Boards	6
Prudential PACs Federal Contributions	8
Prudential PAC State Contributions	15
Prudential PACs Contributions to PACs	19
Trade Association Dues Annual dues, assessments and contributions of \$25,000 or more to trade associations and tax-exempt groups	23

A Note from the PAC Treasurer



I am pleased to announce the release of our 2016 Political Activities and Contributions Report (“annual report”). At Prudential we are committed to operating openly and believe the best way to demonstrate how we do business is to communicate and provide transparency to our shareholders, customers, employees and other important stakeholders.

The decisions made by the government have a tremendous impact on how Prudential operates as a public company and competes in the global marketplace. Accordingly, it is important that the company maintain a presence in the public policy arena to express our viewpoints to legislators and regulators on key matters that impact how we operate as a business.

Prudential sponsors a number of initiatives to help support an active profile in legislative and regulatory processes. Such sponsored activities include direct engagements with state and federal lawmakers and regulators, partnerships with trade organizations, operation of political action committees and, to a lesser extent, the use of corporate funds to support political organizations.

Our annual report provides detailed information on Prudential’s sponsored political contributions and annual association dues, assessments and contributions to trade associations exceeding \$25,000. The Company-sponsored political action committees operate in accordance with all relevant state and federal laws.

Further information about our political action committees is available on the Federal Election Commission’s website at fec.gov. This report also provides a summary of Prudential’s policies and procedures for political activities.

Prudential does not provide direct independent expenditures intended to support communications that expressly advocate the election or defeat of a candidate. In 2016, Prudential did not contribute corporate funds to support any state or local ballot initiative nor did it contribute direct financial or other corporate support to candidates for public office.

If you have any questions related to Prudential’s political activities or contributions please submit an email to prudential.pac@prudential.com.

Sincerely,

Roman Gabriel
Treasurer, The Prudential PACs

Summary of Prudential Policies and Procedures for Political Activity



Prudential Financial, Inc. (“Prudential”) recognizes the importance of participation in the American democratic process, both by individuals and the Company. Prudential also values transparency in this process and appreciates the need to disclose its political activity in an effort to promote ethical corporate governance, participation in political processes and confidence in the American democratic systems.

Prudential’s United States political contributions and those of its political action committees (“PACs” or “Prudential PACs”) are made in accordance with federal and state campaign finance and other applicable laws without regard to the private political preferences of Prudential executives. Internal policies and standards adopted by the Company also govern political activity. The Corporate Governance and Business Ethics Committee of Prudential’s Board of Directors provides guidance and approves the political contributions strategy and policy of the company.

All employees are permitted to engage in political activities to the extent permitted by law, provided they do so as individuals and not as representatives of the Company. Certain personal political contributions of employees and family members are prohibited or restricted under Company policy in order to comply with federal, state and local “pay-to-play” laws pertaining to contributions by vendors to the public sector.

Prudential prohibits individual political contributions for the purpose of influencing or attempting to influence the award of business to the company.

In accordance with federal, state, and local campaign finance laws, Prudential may provide corporate political contributions to state political party committees or other political committees excluding candidate committees. Prudential will not contribute financial or other support to United States political parties, committees, or candidates for public office or support other organizations except where approved by the Head of External Affairs in consultation with the Law Department. All direct corporate contributions will be included in this annual report.

Prudential may also contribute to 527 groups or super PACs in accordance with all federal, state, and local campaign finance laws. Such contributions of \$25,000 or more will be approved by the Head of External Affairs in consultation with the Law Department and will be disclosed in this annual report.

Prudential sponsors PACs to which eligible employees working in the United States may contribute. Such contributions are strictly voluntary, and the Company and its management will not penalize anyone for electing not to participate.

Political contributions made by Prudential PACs provide a voice for Prudential employees so that they may participate in the American democratic process. Prudential PACs support candidates from both major political parties who share Prudential’s vision and values of protecting the retirement, savings, investment and insurance needs of all Americans.

Summary of Prudential Policies and Procedures for Political Activity



Political contribution determinations are made by the Prudential Financial, Inc. Federal Political Action Committee and Prudential Financial Inc. State and Federal Political Action Committee Boards of Directors in consultation with Prudential's External Affairs Department and are executed by the Administrator and Treasurer of the Prudential PACs.

A complete membership listing of the Prudential PACs Boards is included on pages 6 and 7. Each board meets once per year at a minimum. The PAC Director, Treasurer and Boards of Directors are responsible for, respectively, managing and administering all Prudential PACs, including making final decisions as to political contributions and related activities of the PACs.

The External Affairs Department works closely with the Legal and Compliance Departments to ensure that Prudential's internal policies and procedures relating to U.S. political activities are strictly maintained. In addition, a review of the Prudential PACs is conducted every five years by an independent function. Prudential and Prudential's PACs file reports and disclose political contributions and lobbying expenditures to the public through the means prescribed by state and federal governmental authorities.

In their dealings with public officials and government employees, all Prudential employees are required to comply with Prudential's policies on political activities, lobbying and gifts and entertainment, including tracking and reporting activities and related expenses involving dealings with public officials and employees. Prudential lobbyists also are required to comply with relevant laws and behave in a manner that meets generally accepted standards of conduct of the profession.

Federal PAC Board of Directors



BOARD

Lori Fouché

President
Prudential Annuities

Barbara Koster

Senior Vice President
Global Business & Technology Solutions

Jeanette Pollock

Vice President
Enterprise Discontinued Business Solutions

Sharon Taylor

Senior Vice President
Human Resources & Corporate Social
Responsibility

Rex Wackerle

Vice President
External Affairs

Scot Hoffman

Vice President
Global Marketing & Communications

Michael Lillard

Senior Managing Director & Chief Investment
Officer
Prudential Fixed Income

Scott Sleyster

Senior Vice President & Chief Investment Officer

Rob Tyndall

Vice President, Risk Management
Prudential Retirement

OFFICERS

Mark Grier

PAC Chairman
Vice Chairman
Office of the Chairman

Ann Kappler

PAC Vice Chairman
SVP, Deputy General Counsel and
Head of External Affairs

ADMINISTRATION

Roman Gabriel

PAC Treasurer
Vice President, External Affairs

John Feeney

Assistant PAC Treasurer
Vice President, External Affairs

Brandy Stacks

PAC Director
Director, External Affairs

State & Federal PAC Board of Directors



BOARD

Joseph Emanuel

VP and Chief Legal Officer
U.S. Businesses

Jim Gemus

Vice President
Group Insurance

Scot Hoffman

Vice President
Global Marketing & Communications

Jeanette Pollock

Vice President
Enterprise Discontinued Business Solutions

Rex Wackerle

Vice President
External Affairs

OFFICERS

Ann Kappler

PAC Chairman
SVP, Deputy General Counsel
and Head of External Affairs

Michael McCann

PAC Vice Chairman
Vice President
External Affairs

ADMINISTRATION

Roman Gabriel

PAC Treasurer
Vice President, External Affairs

John Feeney

Assistant PAC Treasurer
Vice President, External Affairs

Brandy Stacks

PAC Director
Director, External Affairs

Prudential PACs Federal Contributions



State	Candidate			Party	Amount
Alabama					
	Sen.	Richard	Shelby	REP	\$5,000
	Rep.	Terri	Sewell	DEM	\$3,500
Arkansas					
	Rep.	J. French	Hill	REP	\$1,000
Arizona					
	Sen.	John	McCain	REP	\$2,500
	Rep.	Krysten	Sinema	DEM	\$2,500
California					
	Rep.	Peter	Aguilar	DEM	\$2,500
	Rep.	Xavier	Becerra	DEM	\$1,000
	Rep.	Amerish	Bera	DEM	\$1,000
	Rep.	Tony	Cardenas	DEM	\$3,500
	Rep.	Kevin	McCarthy	REP	\$5,000
	Rep.	Edward	Royce	REP	\$2,500
	Rep.	Linda	Sanchez	DEM	\$2,500
	Rep.	Bradley	Sherman	DEM	\$1,000
	Rep.	Michael	Thompson	DEM	\$5,000
	Rep.	Juan	Vargas	DEM	\$3,500
Colorado					
	Sen.	Michael	Bennet	DEM	\$2,500
	Rep.	Edwin	Perlmutter	DEM	\$2,500
	Rep.	Scott	Tipton	REP	\$2,500
Connecticut					
	Sen.	Richard	Blumenthal	DEM	\$2,000
	Sen.	Christopher	Murphy	DEM	\$2,500
	Rep.	Joseph	Courtney	DEM	\$4,000
	Rep.	Elizabeth	Esty	DEM	\$2,500
	Rep.	James	Himes	DEM	\$2,500
	Rep.	John	Larson	DEM	\$5,000

Prudential PACs Federal Contributions



State	Candidate			Party	Amount
Delaware					
	Sen.	Thomas	Carper	DEM	\$1,000
Florida					
	Rep.	Carlos	Curbelo	REP	\$2,500
	Rep.	Dennis	Ross	REP	\$2,500
	Rep.	Debbie Wasserman	Schultz	DEM	\$2,500
	Rep.	Frederica	Wilson	DEM	\$1,000
Georgia					
	Sen.	Johnny	Isakson	REP	\$2,500
	Rep.	John	Lewis	DEM	\$2,000
	Rep.	David	Scott	DEM	\$2,500
Iowa					
	Sen.	Charles	Grassley	REP	\$5,000
Illinois					
	Rep.	Danny	Davis	DEM	\$1,000
	Rep.	Robert	Dold	REP	\$2,500
	Rep.	Bill	Foster	DEM	\$2,500
	Rep.	Randall	Hultgren	REP	\$2,000
	Rep.	Robin	Kelly	DEM	\$1,000
	Rep.	Michael	Quigley	DEM	\$2,500
	Rep.	Peter	Roskam	REP	\$2,000
Indiana					
	Sen.	Joseph	Donnelly	DEM	\$1,000
	Rep.	Allan	Messer	REP	\$2,500
	Rep.	Peter	Visclosky	DEM	\$2,500
	Rep.	Todd	Young	REP	\$2,000
Kansas					
	Sen.	Pat	Roberts	REP	\$2,500
	Rep.	Lynn	Jenkins	REP	\$1,000

Prudential PACs Federal Contributions



State	Candidate			Party	Amount
Kentucky					
	Sen.	Mitch	McConnell	REP	\$3,000
	Rep.	Garland	Barr	REP	\$1,500
Louisiana					
	Rep.	Stephen	Scalise	REP	\$5,000
Maine					
	Rep.	Bruce	Poliquin	REP	\$1,000
Maryland					
	Rep.	John	Delaney	DEM	\$1,000
Massachusetts					
	Rep.	James	McGovern	DEM	\$2,500
	Rep.	Seth	Moulton	DEM	\$2,500
	Rep.	Richard	Neal	DEM	\$5,000
Michigan					
	Sen.	Gary	Peters	DEM	\$2,000
	Rep.	William	Huizenga	REP	\$2,500
	Rep.	Dan	Kildee	DEM	\$4,000
	Rep.	Brenda	Lawrence	DEM	\$1,000
	Rep.	Sander	Levin	DEM	\$5,000
	Rep.	Timothy	Walberg	REP	\$2,500
Minnesota					
	Rep.	Thomas	Emmer	REP	\$1,000
	Rep.	Erik	Paulsen	REP	\$3,500

Prudential PACs Federal Contributions



State	Candidate			Party	Amount
Missouri					
	Sen.	Claire	McCaskill	DEM	\$1,000
	Rep.	Emanuel	Cleaver	DEM	\$2,500
	Rep.	W. Blain	Luetkemeyer	REP	\$5,000
	Rep.	Jason	Smith	REP	\$2,000
	Rep.	Ann	Wagner	REP	\$2,500
Nebraska					
	Sen.	Ben	Sasse	REP	\$500
	Rep.	Adrian	Smith	REP	\$1,000
Nevada					
	Sen.	Dean	Heller	REP	\$2,500
New Hampshire					
	Sen.	Kelly	Ayotte	REP	\$3,000
	Rep.	Ann	Kuster	DEM	\$1,000
New Jersey					
	Rep.	Bonnie Watson	Coleman	DEM	\$1,000
	Rep.	Rodney	Frelinghuysen	REP	\$5,000
	Rep.	Josh	Gottheimer	DEM	\$2,500
	Rep.	Leonard	Lance	REP	\$2,500
	Rep.	Frank	LoBiondo	REP	\$1,500
	Rep.	Thomas	McArthur	REP	\$3,500
	Rep.	Donald	Norcross	DEM	\$2,500
	Rep.	Donald	Payne Jr.	DEM	\$5,000
	Rep.	Bill	Pascrell	DEM	\$5,000
New Mexico					
	Rep.	Ben Ray	Lujan	DEM	\$1,000

Prudential PACs Federal Contributions



State	Candidate			Party	Amount
New York					
	Sen.	Charles	Schumer	DEM	\$2,500
	Rep.	Joseph	Crowley	DEM	\$5,000
	Rep.	John	Faso	REP	\$2,500
	Rep.	Carolyn	Maloney	DEM	\$1,000
	Rep.	Gregory	Meeks	DEM	\$1,000
	Rep.	Thomas	Reed	REP	\$3,500
	Rep.	Kathleen	Rice	DEM	\$2,500
North Carolina					
	Rep.	George	Holding	REP	\$2,000
	Rep.	Patrick	McHenry	REP	\$4,500
North Dakota					
	Sen.	John	Hoeven	REP	\$2,500
Ohio					
	Rep.	Joyce	Beatty	DEM	\$5,000
	Rep.	Marcia	Fudge	DEM	\$4,000
	Rep.	James	Renacci	REP	\$2,500
	Rep.	Steve	Stivers	REP	\$2,500
Oklahoma					
	Rep.	Frank	Lucas	REP	\$1,000
Oregon					
	Sen.	Ron	Wyden	DEM	\$500
	Rep.	Suzanne	Bonamici	DEM	\$1,000
	Rep.	Kurt	Schrader	DEM	\$2,500

Prudential PACs Federal Contributions



State	Candidate			Party	Amount
Pennsylvania					
	Sen.	Robert	Casey	DEM	\$1,000
	Rep.	Brendan	Boyle	DEM	\$2,000
	Rep.	Matthew	Cartwright	DEM	\$1,000
	Rep.	G. Mike	Kelly	REP	\$2,500
	Rep.	Patrick	Meehan	REP	\$1,000
	Rep.	Keith	Rothfus	REP	\$2,000
Rhode Island					
	Sen.	Jack	Reed	DEM	\$2,000
South Carolina					
	Sen.	Timothy	Scott	REP	\$5,000
	Rep.	Jeffrey	Duncan	REP	\$1,000
South Dakota					
	Sen.	Michael	Rounds	REP	\$2,500
	Sen.	John	Thune	REP	\$2,000
	Rep.	Kristi	Noem	REP	\$2,500
Texas					
	Sen.	John	Cornyn	REP	\$5,000
	Rep.	Kevin	Brady	REP	\$5,000
	Rep.	Kenny	Marchant	REP	\$2,000
Utah					
	Rep.	Jason	Chaffetz	REP	\$1,000
	Rep.	Mia	Love	REP	\$2,500

Prudential PACs Federal Contributions



State	Candidate			Party	Amount
Virginia					
	Sen.	Mark	Warner	DEM	\$2,000
	Rep.	Donald	Beyer	DEM	\$1,500
Washington					
	Sen.	Maria	Cantwell	DEM	\$2,500
	Sen.	Patricia	Murray	DEM	\$2,500
Washington					
	Sen.	Patty	Murray	DEM	\$1,000
	Rep.	Suzan	DelBene	DEM	\$2,000
	Rep.	Dennis	Heck	DEM	\$1,000
	Rep.	Derek	Kilmer	DEM	\$2,500
	Rep.	David	Reichert	REP	\$2,000
Wisconsin					
	Sen.	Tammy	Baldwin	DEM	\$1,000
	Rep.	Sean	Duffy	REP	\$2,500
	Rep.	Ronald	Kind	DEM	\$5,000
	Rep.	Mark	Pocan	DEM	\$3,500
	Rep.	Paul	Ryan	REP	\$5,000

Prudential PAC State Contributions



State	Candidate			Party	Amount
California					
	Lt. Governor	Kevin	De Leon	DEM	\$2,000
	Lt. Governor	Ed	Hernandez	DEM	\$1,000
	State Sen.	Pat	Bates	REP	\$1,000
	State Sen.	Tom	Berryhill	REP	\$1,000
	State Sen.	Jean	Fuller	REP	\$1,000
	State Sen.	Ricardo	Lara	DEM	\$2,000
	State Sen.	Richard	Roth	DEM	\$2,500
	State Rep.	Raul	Bocanegra	DEM	\$1,500
	State Rep.	Phillip	Chen	REP	\$1,500
	State Rep.	Jim	Cooper	DEM	\$1,500
	State Rep.	Tom	Daly	DEM	\$2,500
	State Rep.	Lorena	Gonzalez-Fletcher	DEM	\$2,000
	State Rep.	Chad	Mayes	REP	\$2,000
	State Rep.	Melissa	Melendez	REP	\$1,500
	State Rep.	Anthony	Rendon	DEM	\$2,500
	State Rep.	Marc	Stenorth	REP	\$1,500
Georgia					
	Lt. Governor	Casey	Cagle	REP	\$1,200
	Atty. General	Samuel	Olens	REP	\$1,000
	State Sen.	Charles	Bethel	REP	\$750
	State Sen.	William	Cowsert	REP	\$500
	State Sen.	Steve	Henson	DEM	\$250
	State Sen.	David	Shafer	REP	\$750
	State Rep.	Stacey	Abrams	DEM	\$300
	State Rep.	David	Ralston	REP	\$500
	State Rep.	Richard	Smith	REP	\$500
	State Rep.	Calvin	Smyre	DEM	\$250

Prudential PAC State Contributions



State	Candidate			Party	Amount
Idaho					
	Atty. General	Lawrence	Wasden	REP	\$500
Illinois					
	State Sen.	William	Brady	REP	\$750
	State Sen.	William	Haine	DEM	\$500
	State Sen.	Christine	Radogno	REP	\$500
	State Rep.	Anthony	DeLuca	DEM	\$500
	State Rep.	Jim	Durkin	REP	\$500
	State Rep.	Robert	Rita	DEM	\$500
Indiana					
	State Sen.	Phillip	Boots	REP	\$250
	State Sen.	Douglas	Eckerty	REP	\$250
	State Sen.	Timothy	Lanane	DEM	\$500
	State Sen.	Travis	Holdman	REP	\$1,000
	State Rep.	Terri	Austin	DEM	\$150
	State Rep.	Martin	Carbaugh	REP	\$500
	State Rep.	Christina	Hale	DEM	\$150
	State Rep.	Matthew	Lehman	REP	\$1,000
	State Rep.	Gerald	Torr	REP	\$200
Ohio					
	Justice	Pat	DeWine	REP	\$500
	Justice	Pat	Fischer	REP	\$500
	State Sen.	Sandra	Williams	DEM	\$500
	State Rep.	Robert	Hackett	REP	\$500

Prudential PAC State Contributions



State	Candidate			Party	Amount
Oregon					
	Atty. General	Ellen	Rosenblum	DEM	\$500
Pennsylvania					
	Auditor	Eugene	DePasquale	DEM	\$1,000
	State Sen.	David	Argall	REP	\$500
	State Sen.	Andrew	Dinniman	DEM	\$500
	State Sen.	John	DiSanto	REP	\$600
	State Sen.	Lawrence	Farnese	DEM	\$500
	State Sen.	Scott	Martin	REP	\$500
	State Sen.	Guy	Reschenthaler	REP	\$1,000
	State Sen.	Joseph	Scarnati	REP	\$1,000
	State Sen.	Donald	White	REP	\$1,000
	State Sen.	Sean	Wiley	DEM	\$1,000
	State Rep.	Bryan	Barbin	DEM	\$500
	State Rep.	Kerry	Benninghoff	REP	\$1,000
	State Rep.	Robert	Godshall	REP	\$800
	State Rep.	Joseph	Markosek	DEM	\$500
	State Rep.	Tina	Pickett	REP	\$1,000
	State Rep.	Dave	Reed	REP	\$1,000
	State Rep.	Michael	Turzai	REP	\$1,000
	State Rep.	Christopher	Quinn	REP	\$600
South Dakota					
	Atty. General	Marty	Jackley	REP	\$1,000

Prudential PAC State Contributions



State	Candidate			Party	Amount
Texas					
	Governor	Greg	Abbott	REP	\$7,500
	State Sen.	Kelly	Hancock	REP	\$2,000
	State Sen.	Jose	Rodriguez	DEM	\$1,000
	State Sen.	Kirk	Watson	DEM	\$1,000
	State Rep.	Cesar	Blanco	DEM	\$1,000
	State Rep.	John	Frullo	REP	\$1,500
	State Rep.	Morgan	Meyer	REP	\$500
	State Rep.	Dennis	Paul	REP	\$500
	State Rep.	Kenneth	Sheets	REP	\$2,000
	State Rep.	Joe	Straus	REP	\$1,000
	State Rep.	Larry	Taylor	REP	\$1,000
	State Rep.	Senfronia	Thompson	DEM	\$500
	State Rep.	Hubert	Vo	DEM	\$500
	State Rep.	Paul	Workman	REP	\$1,000

Prudential PAC Contributions to PACs



U.S. Senate – Leadership PACs

Committee	Candidate		Party	State	Amount
21st Century Majority Fund	Sen. Johnny	Isakson	REP	GA	\$2,500
Alamo PAC	Sen. John	Cornyn	REP	TX	\$5,000
America Works PAC	Sen. Sherrod	Brown	DEM	OH	\$5,000
Bluegrass PAC	Sen. Mitch	McConnell	REP	KY	\$5,000
Citizens for Prosperity in America Today PAC	Sen. Patrick	Toomey	REP	PA	\$2,500
Common Sense Colorado	Sen. Michael	Bennet	DEM	CO	\$2,500
Common Values PAC	Sen. John	Barrasso	REP	WY	\$5,000
Forward Together PAC	Sen. Mark	Warner	DEM	VA	\$5,000
Freedom Fund	Sen. Michael	Crapo	REP	ID	\$3,000
Heartland Values PAC	Sen. John	Thune	REP	SD	\$3,000
Hellerhighwater PAC	Sen. Dean	Heller	REP	NV	\$3,500
Holding Onto Oregon's Priorities	Sen. Ron	Wyden	DEM	OR	\$2,000
Hoosiers First PAC	Sen. Joseph	Donnelly	DEM	IN	\$1,500
LEGPAC	Sen. Ben	Cardin	DEM	MD	\$2,500
MURPHPAC	Sen. Chris	Murphy	DEM	CT	\$5,000
New Millennium PAC	Sen. Robert	Menendez	DEM	NJ	\$5,000
Next Century Fund	Sen. Richard	Burr	REP	NC	\$5,000
Opportunity & Responsibility Restored in our Nation PAC	Sen. Orrin	Hatch	REP	UT	\$5,000
Purpose PAC	Sen. Cory	Booker	DEM	NJ	\$5,000
Tenn PAC	Sen. Lamar	Alexander	REP	TN	\$5,000
Treasure State PAC	Sen. Jon	Tester	DEM	MT	\$5,000

Prudential PAC Contributions to PACs



U.S. House – Leadership PACs

Committee	Candidate		Party	State	Amount
AMERIPAC: The Fund for a Greater America	Rep. Steny	Hoyer	DEM	MD	\$5,000
BADGERPAC	Rep. Ron	Kind	DEM	WI	\$5,000
Building America's Republican Representation PAC (BARRPAC)	Rep. Garland	Barr	REP	KY	\$3,500
Building Leadership & Inspiring New Enterprise PAC	Rep. W. Blaine	Luetkemeyer	REP	MO	\$2,500
Building Relationships in Diverse Geographic Environments PAC	Rep. James	Clyburn	DEM	SC	\$5,000
Democrats Reshaping America (DREAMPAC)	Rep. Linda	Sanchez	DEM	CA	\$5,000
EDPAC	Rep. Edwin	Perlmutter	DEM	CO	\$5,000
Fearless PAC	Rep. Jared	Polis	DEM	CO	\$4,000
Freedom & Security PAC	Rep. John	Kline	REP	MN	\$3,000
Giving Willingly Empowering Nationally (GWEN) PAC	Rep. Gwen	Moore	DEM	WI	\$5,000
Jobs, Economy, & Budget Fund (JEB FUND)	Rep. Jeb	Hensarling	REP	TX	\$5,000
Jobs & Innovation Matter PAC (JIMPAC)	Rep. James	Himes	DEM	CT	\$5,000
Majority Committee PAC	Rep. Kevin	McCarthy	REP	TX	\$5,000
Making America Prosperous PAC	Rep. Kevin	Brady	REP	TX	\$5,000
More Conservatives PAC	Rep. Patrick	McHenry	REP	NC	\$5,000
New PAC	Rep. Devin	Nunes	REP	CA	\$5,000
New Pioneers PAC	Rep. Greg	Walden	REP	OR	\$5,000
New Voice PAC	Rep. Joyce	Beatty	DEM	OH	\$5,000

U.S. House – Leadership PACs

Committee	Candidate		Party	State	Amount
Patriots Leading a Majority	Rep. Patrick	Meehan	REP	PA	\$2,500
Pioneer PAC	Rep. Patrick	Tiberi	REP	OH	\$5,000
Prosperity Action Inc.	Rep. Paul	Ryan	REP	WI	\$5,000
Road to Freedom PAC	Rep. Edward	Royce	REP	CA	\$2,500
Silk PAC	Rep. Bill	Pascrell	DEM	NJ	\$5,000
Synergy PAC	Rep. John	Larson	DEM	CT	\$5,000
The Eye of the Tiger PAC	Rep. Steve	Scalise	REP	LA	\$5,000
The Madison PAC	Rep. Richard	Neal	DEM	MA	\$5,000
Victory in November Election PAC (VINEPAC)	Rep. Michael	Thompson	DEM	CA	\$2,500
Wolf PAC	Rep. Emanuel	Cleaver	DEM	MO	\$5,000

Other Committees

Committee	Party	State	Amount
Arizona Leadership Fund		AZ	\$1,000
Blue Dog Political Action Committee	DEM		\$5,000
Build PAC PAC (State Sen. Jacob Corman – PA)	REP	PA	\$1,000
Committee for Hispanic Causes/Building Our Leadership Diversity PAC (CHC BOLD PAC)	DEM		\$5,000
Congressional Black Caucus PAC	DEM		\$5,000
Indiana House Democratic Caucus	DEM	IN	\$1,000
Indiana House Republican Campaign Committee	REP	IN	\$1,000
Indiana Senate Democrat Committee	DEM	IN	\$1,000
Indiana Senate Majority Campaign Committee	REP	IN	\$1,000
New Democrat Coalition PAC	DEM		\$5,000

Annual dues, assessments and contributions of \$25,000 or more to trade associations and tax-exempt groups

ORGANIZATION*	LOBBYING (\$)**	TOTAL DUES
American Bankers Insurance Association	\$5,100.00	\$30,000.00
American Council of Life Insurers	\$339,375.00	\$1,920,400.00
Associated Industries of Florida	\$24,840.00	\$27,600.00
Association for Advanced Life Underwriting (AALU)	\$28,626.58	\$378,626.58
Association for Competitive Taxation (ACT)	\$45,000.00	\$45,000.00
Association of California Life & Health Insurance Companies	\$8,320.00	\$104,000.00
Bipartisan Policy Center	-	\$100,000.00
Boston College Center for Work & Family	-	\$25,000.00
Business Roundtable	\$115,150.00	\$245,000.00
Columbia University (Center for the Management of Systemic Risk)	-	\$150,000.00
Conference of Western Attorneys General (CWAG)	-	\$25,000.00
Connecticut Business & Industry Association	\$28,400.00	\$67,000.00
Corporate Executive Board (CEB)	-	\$1,147,600.00
Council for Disability Awareness	-	\$50,000.00
Council on Foreign Relations	-	\$60,000.00
Democratic Attorneys General Association	\$25,000.00	\$25,000.00
Democratic Governors Association	-	\$25,000.00
ERISA Industry Committee	\$10,000.00	\$50,000.00
Ethics & Compliance Initiative	-	\$50,000.00
Financial Services Information Sharing and Analysis Center	-	\$49,950.00
Financial Services Roundtable	\$96,285.00	\$275,100.00
Florida Insurance Council, Inc.	\$20,021.03	\$59,801.16

Annual dues, assessments and contributions of \$25,000 or more to trade associations and tax-exempt groups

ORGANIZATION*	LOBBYING (\$)**	TOTAL DUES
Geneva Association	-	\$77,353.69
HR Policy Association	\$19,200.00	\$32,000.00
Illinois Life Insurance Council	\$8,940.00	\$29,800.00
Institutional Investor	-	\$721,261.00
Insurance Association of Connecticut	\$5,400.00	\$27,000.00
Insured Retirement Institute	\$19,125.00	\$191,250.00
Integrated Benefits Institute	-	\$50,000.00
Life Insurance and Market Research Assn.	-	\$615,024.00
Life Insurance Council of New York, Inc.	\$14,400.00	\$65,000.00
Massachusetts Institute of Technology Industrial Liaison Program	-	\$150,000.00
Metro Hartford Alliance	\$15,000.00	\$75,000.00
Mortgage Bankers Association	\$4,527.50	\$49,000.00
National Gay & Lesbian Chamber of Commerce (NGLCC)	-	\$25,000.00
National Housing & Rehabilitation Association	-	\$32,350.00
National Minority Supplier Development Council Inc.	-	\$38,000.00
National Multi Housing Council	\$10,205.00	\$40,000.00
National Structured Settlement Trade Association	\$4,050.00	\$40,950.00
New Jersey State Chamber of Commerce	\$9,688.50	\$64,590.00
Republican Attorneys General Association	\$25,000.00	\$25,000.00
Securities Industry & Financial Markets Association	\$11,611.20	\$127,786.00
Rock Center for Corporate Governance (Stanford Law School)	-	\$25,000.00

Annual dues, assessments and contributions of \$25,000 or more to trade associations and tax-exempt groups

ORGANIZATION*	LOBBYING (\$)**	TOTAL DUES
The Aspen Institute	-	\$100,000.00
The Conference Board Inc.	-	\$150,000.00
The Insurance Federation of Pennsylvania	\$13,000.00	\$65,000.00
The Real Estate Roundtable	\$39,000.00	\$60,000.00
The Ripon Society	-	\$25,000.00
United States Chamber of Commerce***	\$57,500.00	\$190,000.00
United States Institute for Legal Reform	\$50,000.00	\$100,000.00
Urban Land Institute	-	\$39,958.33
Women's Business Enterprise National Council	-	\$26,000.00
World 50 Inc.	-	\$75,000.00

* Prudential belongs to various trade organizations that maintain a relevant focus on matters concerning our business interests.

**Non-deductible portion of dues computed pursuant to I.R.C. §162 (e) and Treas. Reg. §1.162.29.

***Total United States Chamber of Commerce Dues includes: 2016 Annual Dues \$100,000; US-Japan Business Council \$25,000; US-Korea Business Council \$10,000; 2016 Asia Sponsorship \$40,000; US-India Business Council \$10,000; and 2016 Retirement Security Council Membership \$5,000.