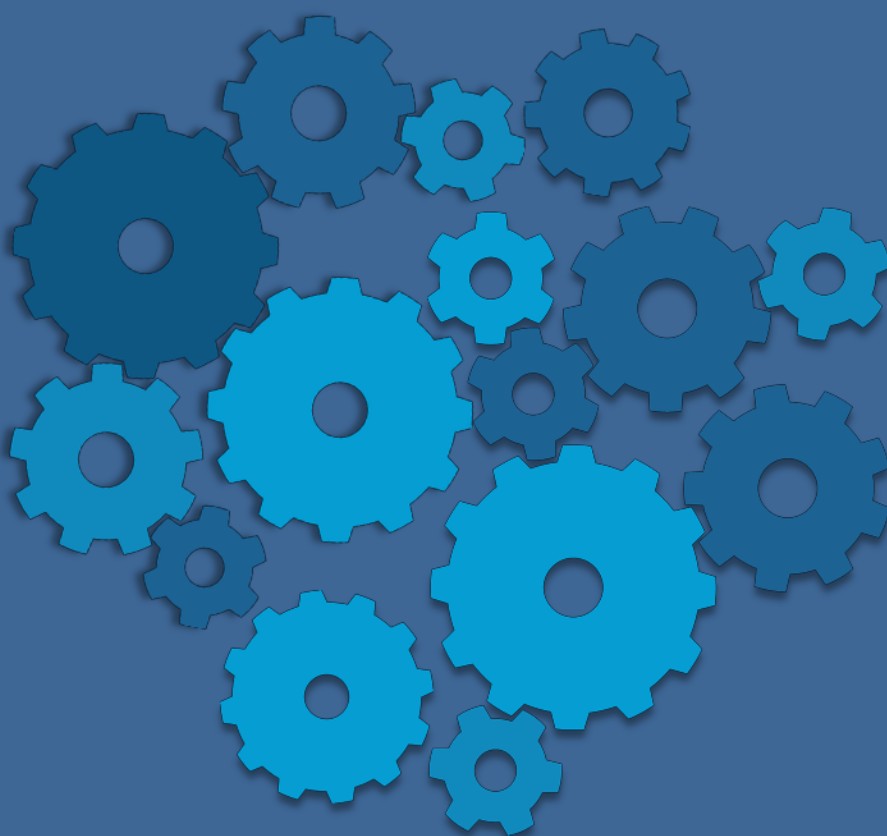


2017 Political Activities and Contributions Report

June 2018



Prudential
Bring Your ChallengesSM

Contents



<u>Section</u>	<u>Page</u>
A Note from the PAC Treasurer	3
Summary of Prudential Policies and Procedures for Political Activity	4
Prudential PAC Boards	6
Prudential PACs Federal Contributions	8
Prudential PAC State Contributions	15
Prudential PACs Contributions to PACs	19
Trade Association Dues Annual dues, assessments and contributions of \$10,000 or more to trade associations and tax-exempt groups	23

A Note from the PAC Treasurer



I am pleased to announce the release of our 2017 Political Activities and Contributions Report (“annual report”). At Prudential we are committed to operating openly and believe the best way to demonstrate how we do business is to communicate and provide transparency to our shareholders, customers, employees and other important stakeholders.

The decisions made by the government can have a tremendous impact on how Prudential operates as a public company and competes in the global marketplace. Accordingly, it is important that the company maintain a presence in the public policy arena to express our viewpoints to legislators and regulators on key matters that impact how we operate as a business.

Prudential sponsors a number of initiatives to help support an active profile in legislative and regulatory processes. Such sponsored activities include direct engagements with state and federal lawmakers and regulators, partnerships with trade organizations, operation of political action committees and, to a lesser extent, the use of corporate funds to support political organizations.

Our annual report provides detailed information on Prudential’s sponsored political contributions and annual association dues, assessments and contributions to trade associations exceeding \$10,000. This report also provides a summary of Prudential’s policies and procedures for political activities.

The Company-sponsored political action committees operate in accordance with all relevant state and federal laws. Further information about our political action committees is available on the Federal Election Commission’s website at www.fec.gov.

Prudential does not provide direct independent expenditures intended to support communications that expressly advocate the election or defeat of a candidate. In 2017, Prudential did not contribute corporate funds to support any state or local ballot initiative nor did it contribute direct financial or other corporate support to candidates for public office.

If you have any questions related to Prudential’s political activities or contributions please submit an email to prudential.pac@prudential.com.

Sincerely,

Roman Gabriel
Treasurer, The Prudential PACs

Summary of Prudential Policies and Procedures for Political Activity



Prudential Financial, Inc. (“Prudential”) recognizes the importance of participation in the American democratic process, both by individuals and the Company. Prudential also values transparency in this process and appreciates the need to disclose its political activity in an effort to promote ethical corporate governance, participation in political processes and confidence in the American democratic systems.

Prudential’s United States political contributions and those of its political action committees (“PACs” or “Prudential PACs”) are made in accordance with federal and state campaign finance and other applicable laws without regard to the private political preferences of Prudential executives. Internal policies and standards adopted by the Company also govern political activity. The Corporate Governance and Business Ethics Committee of Prudential’s Board of Directors provides guidance and approves the political contributions strategy and policy of the company.

All employees are permitted to engage in political activities to the extent permitted by law, provided they do so as individuals and not as representatives of the Company. Certain personal political contributions of employees and family members are prohibited or restricted under Company policy in order to comply with federal, state and local “pay-to-play” laws pertaining to contributions by vendors to the public sector.

Prudential prohibits individual political contributions for the purpose of influencing or attempting to influence the award of business to the company.

In accordance with federal, state, and local campaign finance laws, Prudential may provide corporate political contributions to state political party committees or other political committees excluding candidate committees. Prudential will not contribute financial or other support to United States political parties, committees, or candidates for public office or support other organizations except where approved by the Head of External Affairs in consultation with the Law Department. All direct corporate contributions will be included in this annual report.

Prudential may also contribute to issue advocacy groups including 501(c)4 organizations as well as 527 groups or super PACs in accordance with all federal, state, and local campaign finance laws. Such contributions of \$10,000 or more must be approved by the Head of External Affairs in consultation with the Law Department and will be disclosed in this annual report.

Prudential sponsors PACs to which eligible employees working in the United States may contribute. Such contributions are strictly voluntary, and the Company and its management will not penalize anyone for electing not to participate.

Political contributions made by Prudential PACs provide a voice for Prudential employees so that they may participate in the American democratic process. Prudential’s PACs support candidates from both major political parties who share Prudential’s vision and values of protecting the retirement, savings, investment and insurance needs of all Americans.

Summary of Prudential Policies and Procedures for Political Activity



Political contribution determinations are made by the Prudential Financial, Inc. Federal Political Action Committee and Prudential Financial Inc. State and Federal Political Action Committee Boards of Directors in consultation with Prudential's External Affairs Department and are executed by the Director and Treasurer of the Prudential PACs.

A complete membership listing of the Prudential PACs Boards is included on pages 6 and 7. Each board meets once per year at a minimum. The PAC Director, Treasurer and Boards of Directors are responsible for, respectively, managing and administering all Prudential PACs, including making final decisions as to political contributions and related activities of the PACs.

The External Affairs Department works closely with the Legal and Compliance Departments to ensure that Prudential's internal policies and procedures relating to U.S. political activities are strictly maintained. In addition, a review of the Prudential PACs is conducted every five years by an independent function. Prudential and Prudential's PACs file reports and disclose political contributions and lobbying expenditures to the public through the means prescribed by state and federal governmental authorities.

In their dealings with public officials and government employees, all Prudential employees are required to comply with Prudential's policies on political activities, lobbying and gifts and entertainment, including tracking and reporting activities and related expenses involving dealings with public officials and employees. Prudential lobbyists also are required to comply with relevant laws and behave in a manner that meets generally accepted standards of conduct of the profession.

Federal PAC Board of Directors



BOARD

Laura Burke

Vice President
Global Marketing & Communications

Lori Fouche

Head of Individual Solutions
U.S. Businesses

Barbara Koster

Senior Vice President
Chief Information Officer

Michael Lillard

Managing Director & Chief Investment Officer
Prudential Fixed Income

Sekhar Ramaswamy

HR COO & Chief Talent Officer
Human Resources

Scott Sleyster

Senior Vice President
Domestic Chief Investment Officer

Kent Sluyter

President
Prudential Annuities

Rob Tyndall

Vice President, Risk Management
Prudential Retirement

Rex Wackerle

Vice President
External Affairs

OFFICERS

Mark Grier

PAC Chairman
Vice Chairman

Ann Kappler

PAC Vice Chairman
SVP, Deputy General Counsel &
Head of External Affairs

ADMINISTRATION

Roman Gabriel

PAC Treasurer
Vice President, External Affairs

John Feeney

Assistant PAC Treasurer
Vice President, External Affairs

Brandy Stacks

PAC Director
Director, External Affairs

State & Federal PAC Board of Directors



BOARD

Laura Burke

Vice President
Global Marketing & Communications

Joseph Emanuel

Chief Compliance and Ethics Officer

James Gemus

Senior Vice President
Group Insurance

Sekhar Ramaswamy

HR COO & Chief Talent Officer
Human Resources

Rex Wackerle

Vice President
External Affairs

OFFICERS

Ann Kappler

PAC Chairman
SVP, Deputy General Counsel
& Head of External Affairs

Michael McCann

PAC Vice Chairman
Vice President
External Affairs

ADMINISTRATION

Roman Gabriel

PAC Treasurer
Vice President, External Affairs

John Feeney

Assistant PAC Treasurer
Vice President, External Affairs

Brandy Stacks

PAC Director
Director, External Affairs

Prudential PACs Federal Contributions



State	Candidate			Party	Amount
Alabama					
	Rep.	Bradley	Byrne	REP	\$1,000
Arkansas					
	Sen.	Thomas	Cotton	REP	\$2,500
Arizona					
	Rep.	Ruben	Gallego	DEM	\$1,000
	Rep.	Martha	McSally	REP	\$5,000
	Sen.	Tom	O'Halleran	DEM	\$1,000
	Rep.	Krysten	Sinema	DEM	\$2,500
California					
	Rep.	Peter	Aguilar	DEM	\$3,500
	Rep.	Judy	Chu	DEM	\$1,000
	Rep.	Edward	Royce	REP	\$2,500
	Rep.	Linda	Sanchez	DEM	\$2,500
	Rep.	Eric	Swalwell	DEM	\$2,000
	Rep.	Michael	Thompson	DEM	\$5,000
	Rep.	Maxine	Waters	DEM	\$1,000
	Rep.	Juan	Vargas	DEM	\$3,500
Colorado					
	Rep.	Edwin	Perlmutter	DEM	\$2,500
	Rep.	Scott	Tipton	REP	\$2,500
Connecticut					
	Sen.	Richard	Blumenthal	DEM	\$1,000
	Sen.	Christopher	Murphy	DEM	\$2,500
	Rep.	Joseph	Courtney	DEM	\$2,000
	Rep.	Elizabeth	Esty	DEM	\$5,000
	Rep.	James	Himes	DEM	\$3,500
	Rep.	John	Larson	DEM	\$2,500
Delaware					
	Sen.	Thomas	Carper	DEM	\$4,000
	Rep.	Lisa	Blunt Rochester	DEM	\$3,000

Prudential PACs Federal Contributions



State	Candidate			Party	Amount
Florida					
	Sen.	Bill	Nelson	DEM	\$2,500
	Rep.	Vernon	Buchanan	REP	\$2,000
	Rep.	Charlie	Crist	DEM	\$3,000
	Rep.	Carlos	Curbelo	REP	\$6,500
	Rep.	Dennis	Ross	REP	\$5,000
	Rep.	Debbie Wasserman	Schultz	DEM	\$1,000
	Rep.	Frederica	Wilson	DEM	\$1,000
Georgia					
	Rep.	John	Lewis	DEM	\$1,000
	Rep.	David	Scott	DEM	\$2,500
Hawaii					
	Sen.	Brian	Schatz	DEM	\$2,000
Idaho					
	Sen.	Mike	Crapo	REP	\$3,500
Illinois					
	Sen.	Tammy	Duckworth	DEM	\$1,000
	Rep.	Cheri	Bustos	DEM	\$1,000
	Rep.	Danny	Davis	DEM	\$1,000
	Rep.	Bill	Foster	DEM	\$2,500
	Rep.	Randall	Hultgren	REP	\$1,500
	Rep.	Robin	Kelly	DEM	\$1,000
	Rep.	Raja	Krishnamoorthi	DEM	\$2,000
	Rep.	Darin	LaHood	REP	\$2,000
	Rep.	Peter	Roskam	REP	\$2,500
	Rep.	Bradley	Schneider	DEM	\$1,000
Indiana					
	Sen.	Joseph	Donnelly	DEM	\$1,000
	Rep.	Trey	Hollingsworth	REP	\$2,000
	Rep.	Allan Lucas	Messer	REP	\$5,000
	Rep.	Jacqueline	Walorski	REP	\$2,500

Prudential PACs Federal Contributions



State	Candidate			Party	Amount
Kentucky					
	Rep.	Garland	Barr	REP	\$1,500
	Rep.	Brett	Guthrie	REP	\$1,000
Maryland					
	Sen.	Benjamin	Cardin	DEM	\$5,000
	Rep.	John	Delaney	DEM	\$2,500
	Rep.	Christopher	Van Hollen	DEM	\$1,000
Massachusetts					
	Rep.	Seth	Moulton	DEM	\$1,000
	Rep.	Richard	Neal	DEM	\$5,000
Michigan					
	Sen.	Gary	Peters	DEM	\$2,500
	Sen.	Debbie	Stabenow	DEM	\$4,500
	Rep.	Michael	Bishop	REP	\$7,000
	Rep.	William	Huizenga	REP	\$2,500
	Rep.	Daniel	Kildee	DEM	\$1,000
	Rep.	Timothy	Walberg	REP	\$5,000
Minnesota					
	Rep.	Thomas	Emmer	REP	\$1,500
	Rep.	Erik	Paulsen	REP	\$5,000
Missouri					
	Sen.	Claire	McCaskill	DEM	\$5,000
	Rep.	Emanuel	Cleaver	DEM	\$5,000
	Rep.	W. Blain	Luetkemeyer	REP	\$5,000
	Rep.	Jason	Smith	REP	\$2,500
	Rep.	Ann	Wagner	REP	\$5,000
Montana					
	Sen.	Jon	Tester	DEM	\$5,000

Prudential PACs Federal Contributions



State	Candidate			Party	Amount
Nevada					
	Sen.	Dean	Heller	REP	\$2,500
	Rep.	Ruden	Kihuen	DEM	\$1,000
New Hampshire					
	Rep.	Ann	Kuster	DEM	\$4,000
New Jersey					
	Sen.	Robert	Menendez	DEM	\$5,000
	Rep.	Bonnie Watson	Coleman	DEM	\$1,000
	Rep.	Rodney	Frelinghuysen	REP	\$5,000
	Rep.	Josh	Gottheimer	DEM	\$5,000
	Rep.	Leonard	Lance	REP	\$2,500
	Rep.	Thomas	McArthur	REP	\$5,000
	Rep.	Donald	Norcross	DEM	\$3,500
	Rep.	Frank	Pallone	DEM	\$2,000
	Rep.	Donald	Payne Jr.	DEM	\$5,000
	Rep.	Bill	Pascrell	DEM	\$5,000
New York					
	Rep.	Joseph	Crowley	DEM	\$6,000
	Rep.	Brian	Higgins	DEM	\$2,000
	Rep.	Hakeem	Jeffries	DEM	\$1,000
	Rep.	Carolyn	Maloney	DEM	\$1,000
	Rep.	Gregory	Meeks	DEM	\$2,500
	Rep.	Thomas	Reed	REP	\$2,500
	Rep.	Kathleen	Rice	DEM	\$1,000
	Rep.	Nydia	Velazquez	DEM	\$2,500
	Rep.	Lee	Zeldin	REP	\$1,000

Prudential PACs Federal Contributions



State	Candidate			Party	Amount
North Carolina					
	Sen.	Thomas	Tillis	REP	\$2,500
	Rep.	Virginia	Foxx	REP	\$2,500
	Rep.	George	Holding	REP	\$2,500
	Rep.	Patrick	McHenry	REP	\$5,000
	Rep.	Robert	Pittenger	REP	\$1,000
North Dakota					
	Sen.	Heidi	Heitkamp	DEM	\$5,000
Ohio					
	Sen.	Rob	Portman	REP	\$1,000
	Rep.	Joyce	Beatty	DEM	\$5,000
	Rep.	Marcia	Fudge	DEM	\$1,500
	Rep.	Pat	Tiberi	REP	\$5,000
Oklahoma					
	Rep.	Frank	Lucas	REP	\$1,500
Oregon					
	Rep.	Earl	Blumenauer	DEM	\$2,500
	Rep.	Suzanne	Bonamici	DEM	\$1,000
	Rep.	Kurt	Schrader	DEM	\$2,500
	Rep.	Gregory	Walden	REP	\$5,000
Pennsylvania					
	Sen.	Robert	Casey	DEM	\$2,000
	Rep.	Brendan	Boyle	DEM	\$1,000
	Rep.	Matthew	Cartwright	DEM	\$2,000
	Rep.	Ryan	Costello	REP	\$2,500
	Rep.	G. Mike	Kelly	REP	\$2,500
	Rep.	Patrick	Meehan	REP	\$2,500
	Rep.	Keith	Rothfus	REP	\$2,500

Prudential PACs Federal Contributions



State	Candidate			Party	Amount
Rhode Island					
	Sen.	Jack	Reed	DEM	\$1,000
South Carolina					
	Sen.	Timothy	Scott	REP	\$1,000
	Rep.	Jeffrey	Duncan	REP	\$1,000
	Rep.	Tom	Rice	REP	\$1,000
South Dakota					
	Sen.	Michael	Rounds	REP	\$2,500
	Sen.	John	Thune	REP	\$5,000
Texas					
	Rep.	Vincente	Gonzalez	DEM	\$1,000
	Rep.	Jeb	Hensarling	REP	\$5,000
	Rep.	David	Kustoff	REP	\$1,000
	Rep.	Roger	Williams	REP	\$1,000
Utah					
	Sen.	Orrin	Hatch	REP	\$5,000
Virginia					
	Sen.	Timothy	Kaine	DEM	\$1,000
	Sen.	Mark	Warner	DEM	\$2,000
Washington					
	Sen.	Maria	Cantwell	DEM	\$2,500
	Sen.	Patricia	Murray	DEM	\$2,500
Washington					
	Sen.	Patty	Murray	DEM	\$2,000
	Rep.	Suzan	DelBene	DEM	\$4,000
	Rep.	Denny	Heck	DEM	\$1,000
	Rep.	Derek	Kilmer	DEM	\$2,500

Prudential PACs Federal Contributions



State	Candidate			Party	Amount
Wisconsin					
	Rep.	Sean	Duffy	REP	\$5,000
	Rep.	Ronald	Kind	DEM	\$5,000
	Rep.	Gwendolynne	Moore	DEM	\$2,500
	Rep.	Mark	Pocan	DEM	\$2,000
	Rep.	Paul	Ryan	REP	\$5,000

Prudential PAC State Contributions



State	Candidate			Party	Amount
Arizona					
	Governor	Doug	Ducey	REP	\$5,000
	State Sen.	Sonny	Borrelli	REP	\$200
	State Sen.	Karen	Fann	REP	\$400
	State Sen.	David	Farnsworth	REP	\$400
	State Sen.	John	Kavanagh	REP	\$200
	State Sen.	Debbie	Laesko	REP	\$800
	State Sen.	Catherine	Miranda	DEM	\$200
	State Sen.	Kimberly	Yee	REP	\$400
	State Rep.	John	Allen	REP	\$400
	State Rep.	Kelli	Butler	DEM	\$200
	State Rep.	Regina	Cobb	REP	\$200
	State Rep.	David	Livingston	REP	\$500
	State Rep.	Javan	Mesnard	REP	\$500
	State Rep.	Don	Shooter	REP	\$300
	State Rep.	Kelly	Townsend	REP	\$200
	State Rep.	Jeff	Weninger	REP	\$200
California					
	Lt. Governor	Kevin	De Leon	DEM	\$2,500
	State Sen.	Patricia	Bates	REP	\$2,800
	State Sen.	Ted	Gaines	REP	\$3,200
	State Rep.	Brian	Dahle	REP	\$2,800
	State Rep.	Tom	Daly	DEM	\$3,200
	State Rep.	Chad	Mayes	REP	\$2,800
	State Rep.	Anthony	Rendon	DEM	\$3,200

Prudential PAC State Contributions



State	Candidate			Party	Amount
Georgia					
	Lt. Governor	Casey	Cagle	REP	\$1,200
	Atty. General	Christopher	Carr	REP	\$1,000
	State Sen.	Burt	Jones	REP	\$750
	State Sen.	Butch	Miller	REP	\$500
	State Sen.	David	Shafer	REP	\$750
	State Sen.	Larry	Walker	REP	\$250
	State Rep.	Chuck	Efstration	REP	\$300
	State Rep.	Howard	Maxwell	REP	\$250
	State Rep.	David	Ralston	REP	\$500
	State Rep.	Jason	Shaw	REP	\$500
	State Rep.	Richard	Smith	REP	\$750
	State Rep.	Calvin	Smyre	REP	\$250
Idaho					
	Atty. General	Lawrence	Wasden	REP	\$500
Illinois					
	State Sen.	William	Brady	REP	\$1,000
	State Sen.	John	Mulroe	DEM	\$1,000
	State Sen.	Antonio	Munoz	DEM	\$500
	State Sen.	Dale	Righter	REP	\$500
	State Sen.	Dave	Syverson	REP	\$500
	State Rep.	Anthony	DeLuca	DEM	\$500
	State Rep.	Jim	Durkin	REP	\$500
	State Rep.	David	Reis	REP	\$500
	State Rep.	Michael	Unes	REP	\$500

Prudential PAC State Contributions



State	Candidate			Party	Amount
Indiana					
	State Sen.	Timothy	Lanane	DEM	\$350
	State Sen.	Travis	Holdman	REP	\$1,000
	State Rep.	Terri	Austin	DEM	\$150
	State Rep.	Martin	Carbaugh	REP	\$1,000
	State Rep.	Matthew	Lehman	REP	\$500
Michigan					
	State Sen.	Kenneth	Horn	REP	\$250
	State Sen.	Joe	Hune	REP	\$250
	State Sen.	Martin	Knollenberg	REP	\$250
	State Sen.	Margaret	O'Brien	REP	\$250
	State Sen.	Wayne	Schmidt	REP	\$250
	State Sen.	Mike	Shirkey	REP	\$250
	State Sen.	Dale	Zorn	REP	\$250
	State Rep.	Tom	Barrett	REP	\$500
	State Rep.	Joseph	Bellino	REP	\$150
	State Rep.	Lee	Chatfield	REP	\$200
	State Rep.	Gary	Glenn	REP	\$250
	State Rep.	Michele	Hoitenga	REP	\$200
	State Rep.	Beau	LaFave	REP	\$300
	State Rep.	Tom	Leonard	REP	\$250
	State Rep.	Lana	Theis	REP	\$250
	State Rep.	Curt	Vanderwall	REP	\$400
	State Rep.	Mike	Webber	REP	\$250
	State Rep.	Jason	Wentworth	REP	\$250

Prudential PAC State Contributions



State	Candidate			Party	Amount
Ohio					
	State Sen.	Edna	Brown	DEM	\$350
	State Sen.	Robert	Hackett	REP	\$500
	State Sen.	Jay	Hottinger	REP	\$1,000
	State Sen.	Sean	O'Brien	DEM	\$300
	State Sen.	Sandra	Williams	DEM	\$350
	State Sen.	Steve	Wilson	REP	\$350
	State Rep.	John	Boccieri	DEM	\$350
	State Rep.	Kristin	Boggs	DEM	\$250
	State Rep.	Thomas	Brinkman	REP	\$1,000
	State Rep.	Glenn	Holmes	DEM	\$250
	State Rep.	Larry	Householder	REP	\$250
	State Rep.	Sarah	LaTourette	REP	\$350
	State Rep.	Ryan	Smith	REP	\$350
	State Rep.	Fred	Strahom	DEM	\$350
Oregon					
	Atty. General	Ellen	Rosenblum	DEM	\$500
Pennsylvania					
	State Sen.	Jacob	Corman	REP	\$1,000
	State Sen.	John	Eichelberger	REP	\$500
	State Sen.	Lawrence	Farnese	DEM	\$500
	State Sen.	Guy	Reshebthaler	REP	\$500
	State Sen.	Joseph	Scarnati	REP	\$1,000
	State Sen.	Judith	Schwank	DEM	\$250
	State Sen.	Donald	White	REP	\$1,000
	State Rep.	Dominic	Costa	DEM	\$500
	State Rep.	Margo	Davidson	DEM	\$750
	State Rep.	Anthony	DeLuca	DEM	\$1,000

Prudential PAC State Contributions



State	Candidate			Party	Amount
Pennsylvania					
	State Rep.	Warren	Kampf	REP	\$500
	State Rep.	Joseph	Markosek	DEM	\$500
	State Rep.	Tina	Pickett	REP	\$1,000
	State Rep.	David	Reed	REP	\$1,000
	State Rep.	Michael	Tobash	REP	\$500
	State Rep.	Jesse	Topper	REP	\$500
	State Rep.	Michael	Turzai	REP	\$1,000
South Dakota					
	Atty. General	Marty	Jackley	REP	\$500
Texas					
	Governor	Greg	Abbott	REP	\$2,000
	State Sen.	Donna	Campbell	REP	\$1,000
	State Sen.	Brandon	Creighton	REP	\$1,000
	State Sen.	Kelly	Hancock	REP	\$1,500
	State Sen.	Robert	Nichols	REP	\$1,000
	State Sen.	Jose	Rodriguez	DEM	\$1,000
	State Sen.	Charles	Schwertner	REP	\$1,000
	State Sen.	Larry	Taylor	REP	\$1,000
	State Sen.	Kirk	Watson	DEM	\$1,000
	State Sen.	Judith	Zaffirini	DEM	\$1,000
	State Rep.	Rodney	Anderson	REP	\$500
	State Rep.	Cesar	Blanco	DEM	\$500
	State Rep.	Greg	Bonnen	REP	\$500
	State Rep.	Harold	Dutton	DEM	\$500
	State Rep.	Dan	Flynn	REP	\$500
	State Rep.	John	Frullo	REP	\$500
	State Rep.	Lance	Gooden	REP	\$500

Prudential PAC State Contributions



State	Candidate			Party	Amount
Texas					
	State Rep.	Todd	Hunter	REP	\$500
	State Rep.	Rene	Oliveira	DEM	\$500
	State Rep.	Tom	Oliverson	REP	\$500
	State Rep.	Dennis	Paul	REP	\$500
	State Rep.	Lawrence	Phillips	REP	\$1,000
	State Rep.	W. Four	Price	REP	\$500
	State Rep.	Scott	Sanford	REP	\$500
	State Rep.	Ed	Thompson	REP	\$500
	State Rep.	Senfronia	Thompson	DEM	\$500
	State Rep.	Chris	Turner	DEM	\$500
	State Rep.	Hubert	Vo	DEM	\$500
	State Rep.	Paul	Workman	REP	\$500
	State Rep.	John	Zerwas	REP	\$500
Virginia					
	Atty. General	Mark	Herring	DEM	\$500

Prudential PAC Contributions to PACs



U.S. Senate – Leadership PACs

Committee	Candidate		Party	State	Amount
21st Century Majority Fund	Sen. Johnny	Isakson	REP	GA	\$5,000
Alamo PAC	Sen. John	Cornyn	REP	TX	\$5,000
All For Our Country Leadership PAC	Sen. Catherine	Cortez Masto	DEM	NV	\$1,000
America Works PAC	Sen. Sherrod	Brown	DEM	OH	\$5,000
Bluegrass PAC	Sen. Mitch	McConnell	REP	KY	\$5,000
Citizens for Prosperity in America Today PAC	Sen. Patrick	Toomey	REP	PA	\$2,500
Common Values PAC	Sen. John	Barrasso	REP	WY	\$2,500
Defend America PAC	Sen. Richard	Shelby	REP	AL	\$2,500
Forward Together PAC	Sen. Mark	Warner	DEM	VA	\$5,000
Freedom Fund	Sen. Michael	Crapo	REP	ID	\$5,000
Heartland Values PAC	Sen. John	Thune	REP	SD	\$5,000
Hoosiers First PAC	Sen. Joseph	Donnelly	DEM	IN	\$1,000
Making Business Excel PAC	Sen. Michael	Enzi	REP	WY	\$2,500
MURPHPAC	Sen. Chris	Murphy	DEM	CT	\$5,000
New Millennium PAC	Sen. Robert	Menendez	DEM	NJ	\$5,000
Next Century Fund	Sen. Richard	Burr	REP	NC	\$5,000
One Georgia PAC	Sen. David	Perdue	REP	NC	\$2,500
Promoting Our Republican Team PAC	Sen. Rob	Portman	REP	OH	\$1,500
Purpose PAC	Sen. Cory	Booker	DEM	NJ	\$5,000
TENN PAC	Sen. Lamar	Alexander	REP	TN	\$5,000
The Hawkeye PAC	Sen. Charles	Grassley	REP	IA	\$5,000
Tomorrow is Meaningful PAC	Sen. Tim	Scott	REP	SC	\$5,000

Prudential PAC Contributions to PACs



U.S. House – Leadership PACs

Committee	Candidate		Party	State	Amount
AMERIPAC: The Fund for a Greater America	Rep. Steny	Hoyer	DEM	MD	\$5,000
BADGERPAC	Rep. Ron	Kind	DEM	WI	\$5,000
Building America's Republican Representation PAC (BARRPAC)	Rep. Garland	Barr	REP	KY	\$4,000
Building Relationships in Diverse Geographic Environments PAC	Rep. James	Clyburn	DEM	SC	\$5,000
Democrats Reshaping America (DREAMPAC)	Rep. Linda	Sanchez	DEM	CA	\$5,000
EDPAC	Rep. Edwin	Perlmutter	DEM	CO	\$2,500
Fearless PAC	Rep. Jared	Polis	DEM	CO	\$1,000
Grassroots Organizing Acting & Leading PAC – GOAL PAC	Rep. Sander	Levin	DEM	MI	\$2,500
Jobs, Economy, & Budget Fund (JEB FUND)	Rep. Jeb	Hensarling	REP	TX	\$5,000
Jobs & Innovation Matter PAC (JIMPAC)	Rep. James	Himes	DEM	CT	\$2,500
Majority Committee PAC	Rep. Kevin	McCarthy	REP	TX	\$5,000
More Conservatives PAC	Rep. Patrick	McHenry	REP	NC	\$5,000
New PAC	Rep. Devin	Nunes	REP	CA	\$5,000
New Pioneers PAC	Rep. Greg	Walden	REP	OR	\$5,000
Patriots Leading a Majority	Rep. Patrick	Meehan	REP	PA	\$2,500
People for Enterprise Trade & Economic Growth – PETE PAC	Rep. Pete	Sessions	REP	TX	\$2,000
Pioneer PAC	Rep. Patrick	Tiberi	REP	OH	\$5,000
Promise PAC	Rep. Marcia	Fudge	DEM	OH	\$1,500
Prosperity Action Inc.	Rep. Paul	Ryan	REP	WI	\$5,000
Support to Ensure Victory Everywhere PAC – Steve PAC	Rep. Steve	Stivers	REP	OH	\$5,000

U.S. House – Leadership PACs

Committee	Candidate		Party	State	Amount
Silk PAC	Rep. Bill	Pascrell	DEM	NJ	\$2,500
Synergy PAC	Rep. John	Larson	DEM	CT	\$5,000
The Eye of the Tiger PAC	Rep. Steve	Scalise	REP	LA	\$5,000
The Madison PAC	Rep. Richard	Neal	DEM	MA	\$5,000
TMAC PAC	Rep. Tom	MacArthur	REP	NJ	\$5,000
Together Everyone Realizes Real Impact – TERRI PAC	Rep. Terri	Sewell	DEM	AL	\$5,000
Victory by Investing Building & Empowering – VIBE PAC	Rep. Tony	Cardenas	DEM	CA	\$2,500
Wolf PAC	Rep. Emanuel	Cleaver	DEM	MO	\$2,500

Other Political Committees

Committee	Party	State	Amount
Blue Dog Political Action Committee	DEM		\$5,000
California Latino Caucus Leadership PAC		AZ	\$7,300
Committee for Hispanic Causes/Building Our Leadership Diversity PAC (CHC BOLD PAC)	DEM		\$5,000
Congressional Black Caucus PAC	DEM		\$5,000
Future Forum PAC	DEM		\$3,500
Indiana House Democratic Caucus	DEM	IN	\$500
Indiana House Republican Campaign Committee	REP	IN	\$1,000
Indiana Senate Democrat Committee	DEM	IN	\$500
Indiana Senate Majority Campaign Committee	REP	IN	\$1,000
Michigan House Republican Campaign Committee	REP	MI	\$250
New Democrat Coalition PAC	DEM		\$5,000

Annual dues, assessments and contributions of \$10,000 or more to trade associations and tax-exempt groups

ORGANIZATION*	LOBBYING (\$) **	TOTAL DUES
American Bankers Association	\$5,100.00	\$30,000.00
American Benefits Council	\$8,933.33	\$43,000.00
American Council for Capital Formation (ACCF)	\$125.00	\$10,000.00
American Council of Life Insurers	\$333,750.01	\$1,875,000.00
American Seniors Housing Association	\$625.00	\$12,500.00
Associated Industries of Florida	\$22,356.00	\$32,600.00
Association for Advanced Life Underwriting (AALU)	\$28,626.58	\$328,626.58
Association for Competitive Taxation (ACT)	\$45,000.00	\$45,000.00
Association of California Life & Health Insurance Companies	\$7,571.20	\$108,160.00
Association of Institutional Investors	-	\$50,000.00
Association of Ohio Life Insurance Companies	\$8,500.00	\$17,000.00
Bipartisan Policy Center	-	\$100,000.00
Boston College Center for Work & Family	-	\$26,250.00
Business Forward, Inc.	\$1,000.00	\$10,000.00
Business Roundtable	\$112,200.00	\$255,000.00
California Chamber of Commerce	\$4,375.00	\$17,500.00
Catalyst Inc.	-	\$20,000.00
Center for Advanced Human Resource Studies (CAHRS)	-	\$20,000.00
Center for Talent Innovation	-	\$25,000.00
Center for Workplace Compliance	-	\$14,325.00
Coalition Against Insurance Fraud*	-	\$15,500.00
Columbia University (Center for the Management of Systemic Risk)	-	\$150,000.00
Committee on Healthcare Financing	-	\$10,000.00
Conference of Western Attorneys General (CWAG)	-	\$25,000.00
Corporate Executive Board (CEB)	-	\$1,105,920.00
Council of Institutional Investors	-	\$18,000.00
CRE Finance Council	\$8,550.00	\$15,000.00

Annual dues, assessments and contributions of \$10,000 or more to trade associations and tax-exempt groups

ORGANIZATION*	LOBBYING (\$) **	TOTAL DUES
Defined Contribution Institutional Investment Association	-	\$18,500.00
Democratic Attorneys General Association	\$25,000.00	\$25,000.00
Democratic Governors Association	-	\$25,000.00
District of Columbia Insurance Federation (DCIF)	\$3,750.00	\$15,000.00
EMTA (Emerging Markets Traders Association)	-	\$12,500.00
Equipment Leasing & Finance Association (ELFA)	\$3,040.20	\$11,260.00
ERISA Industry Committee	\$8,750.00	\$50,000.00
Ethics & Compliance Officer Association	-	\$50,000.00
Executive Networks, Inc.	-	\$52,500.00
Financial Services Information Sharing and Analysis Center	-	\$57,950.00
Florida Insurance Council, Inc.	\$24,408.28	\$61,125.31
Geneva Association	-	\$78,994.00
Greater Valley Chamber of Commerce	-	\$10,050.00
HR Policy Association	\$21,000.00	\$35,000.00
Illinois Life Insurance Council	\$8,940.00	\$29,800.00
Institute of International Finance, Inc.	-	\$75,000.00
Insurance Association of Connecticut	\$5,400.00	\$27,000.00
Insured Retirement Institute	\$13,762.50	\$191,750.00
Integrated Benefits Institute	-	\$50,000.00
Investment Company Institute (ICI)	-	\$937,127.18
KnowledgeConnect LLC	-	\$31,000.00
LCLD (Leadership Council on Legal Diversity)	-	\$10,000.00
Life Insurance and Market Research Assn. (LIMRA)	-	\$636,550.00
Life Insurance Association of Massachusetts	\$6,732.00	\$19,800.00
Life Insurance Association of Michigan	\$1,725.00	\$15,000.00
Life Insurance Council of New York, Inc. (LICONY)	\$17,400.00	\$65,000.00
Louisiana Insurers Conference	\$2,681.05	\$10,601.21
Market Focus Research Ltd.	-	\$15,000.00
Metro Hartford Alliance	\$581.74	\$34,220.00
Minnesota Insurance and Financial Services (MIFSC)	\$11,100.00	\$15,000.00

Annual dues, assessments and contributions of \$10,000 or more to trade associations and tax-exempt groups

ORGANIZATION*	LOBBYING (\$) **	TOTAL DUES
MIT Initiative on the Digital Economy	-	\$100,000.00
Mortgage Bankers Association	\$5,906.63	\$39,377.50
NAREIM (National Association of Real Estate Investment Managers)	-	\$12,000.00
National Business Group on Health	\$58.25	\$34,000.00
National Gay & Lesbian Chamber of Commerce (NGLCC)	-	\$25,000.00
National Minority Supplier Development Council Inc.	-	\$38,000.00
National MultiFamily Housing Council	\$14,400.00	\$40,000.00
National Structured Settlement Trade Association	\$2,700.00	\$30,000.00
New Jersey State Chamber of Commerce	\$9,980.25	\$66,535.00
New York Alliance Against Insurance Fraud, Inc.	-	\$10,101.00
Newark Regional Business Partnership	\$1,750.00	\$87,500.00
North American CRO Council	\$2,400.00	\$16,000.00
Public Affairs Council*	-	\$12,900.00
Regents of The University of Minnesota	-	\$25,000.00
Republican Attorneys General Association	\$25,000.00	\$25,000.00
Republican Governors Association	-	\$25,000.00
Rock Center for Corporate Governance (Stanford Law School)	-	\$25,000.00
Securities Industry & Financial Markets Association	\$19,971.90	\$133,146.00
Shoreland, Inc.	-	\$10,000.00
Stable Value Investment Association	\$2,400.00	\$24,000.00
StemConnector	-	\$50,000.00
Structured Finance Industry Group	\$550.00	\$10,000.00
Texas Association of Business	\$7,303.45	\$20,867.00
Texas Association of Life & Health Insurers (TALHI)	\$3,743.25	\$24,955.00
The Aspen Institute	-	\$100,000.00
The Borderplex Alliance	-	\$15,000.00
The Brookings Institution	-	\$50,000.00
The Conference Board Inc.	-	\$164,300.00
The Financial Services Roundtable	\$84,367.50	\$281,225.00
The Insurance Federation of Pennsylvania	\$13,650.00	\$68,250.00

Annual dues, assessments and contributions of \$10,000 or more to trade associations and tax-exempt groups

ORGANIZATION*	LOBBYING (\$) **	TOTAL DUES
The Real Estate Roundtable	\$22,750.00	\$35,000.00
The Ripon Society*	-	\$25,000.00
The Spark Institute, Inc.	\$150.00	\$10,000.00
United States Chamber of Commerce***	\$51,750.00	\$185,000.00
United States Institute for Legal Reform	\$40,000.00	\$100,000.00
Urban Land Institute	-	\$40,084.00
Women's Business Enterprise National Council	-	\$26,000.00
Women Presidents' Educational Organization, Inc.	-	\$10,000.00
World 50 Inc.	-	\$225,000.00

**Prudential belongs to various trade organizations that maintain a relevant focus on matters concerning our business interests. Organizations organized as I.R.C. 501(c)4 entities are denoted with an asterisk (*).*

***Non-deductible portion of dues computed pursuant to I.R.C. §162 (e) and Treas. Reg. §1.162.29.*

****Total United States Chamber of Commerce Dues includes: 2017 Annual Dues \$100,000; US-Japan Business Council \$25,000; US-Korea Business Council \$10,000; 2017 Asia Sponsorship \$40,000; US-India Business Council \$10,000.*