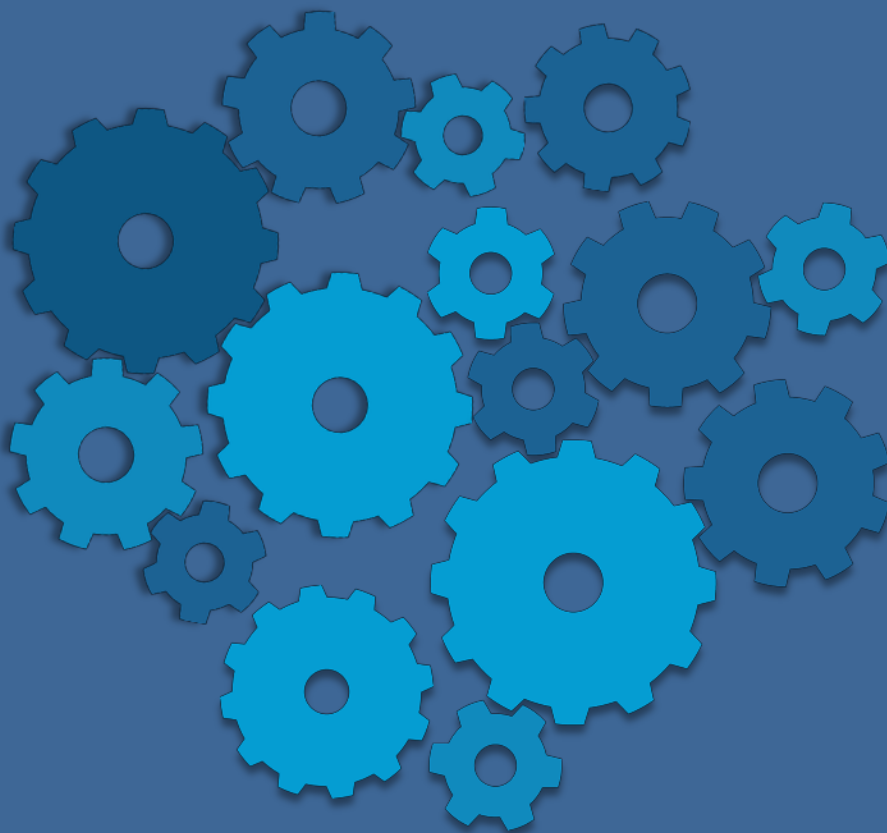


2019 Political Activities and Contributions Report

June 2020



Prudential
Bring Your ChallengesSM

Contents

<u>Section</u>	<u>Page</u>
A Note from the PAC Treasurer	3
Summary of Prudential Policies and Procedures for Political Activity	4
Prudential PAC Boards	6
Prudential PACs Federal Contributions	8
Prudential PAC State Contributions	14
Prudential PACs Contributions to PACs	19
Trade Association Dues Annual dues, assessments and contributions of \$10,000 or more to trade associations and tax-exempt groups	23

A Note from the PAC Treasurer



I am pleased to announce the release of our 2019 Political Activities and Contributions Report (“annual report”). At Prudential we are committed to conducting business in an ethical and transparent manner and believe the best way to demonstrate how we do business is to communicate and provide transparency to our shareholders, customers, employees and other important stakeholders.

The decisions made by the government can have a tremendous influence on how Prudential operates as a public company and competes in the global marketplace. Accordingly, it is important that the company maintain a presence in the public policy arena to stay informed about public policies and express our viewpoints to legislators and regulators on key matters that impact how we operate as a business and deliver value to our stakeholders

Prudential sponsors several initiatives to help support an active profile in legislative and regulatory processes. Such sponsored activities include direct engagements with state and federal lawmakers and regulators, partnerships with trade organizations and industry coalitions, thought leadership engagement, operation of political action committees and, to a lesser extent, the use of corporate funds to support political organizations.

Our annual report provides detailed information on Prudential’s sponsored political contributions and annual association dues, assessments and contributions to trade associations exceeding \$10,000. This report also provides a summary of Prudential’s policies and procedures for political activities.

The Company-sponsored political action committees operate in accordance with all relevant state and federal laws. Further information about our political action committees is available on the Federal Election Commission’s website at www.fec.gov.

Prudential does not provide direct independent expenditures intended to support communications that expressly advocate the election or defeat of a candidate. In 2019, Prudential did not contribute corporate funds to support any state or local ballot initiative nor did it contribute direct financial or other corporate support to candidates for public office.

If you have any questions related to Prudential’s political activities or contributions, please submit an email to prudential.pac@prudential.com.

Sincerely,

Roman Gabriel
Treasurer, The Prudential PACs

Summary of Prudential Policies and Procedures for Political Activity



Prudential Financial, Inc. (“Prudential”) recognizes the importance of participation in the American democratic process, both by individuals and the Company. Prudential also values transparency in this process and appreciates the need to disclose its political activity in an effort to promote ethical corporate governance, participation in political processes and confidence in the American democratic systems.

Prudential’s United States political contributions and those of its political action committees (“PACs” or “Prudential PACs”) are made in accordance with federal and state campaign finance and other applicable laws without regard to the private political preferences of Prudential executives. Internal policies and standards adopted by the Company also govern political activity. The Corporate Governance and Business Ethics Committee of Prudential’s Board of Directors provides guidance and approves the political contributions strategy and policy of the company.

All employees are permitted to engage in political activities to the extent permitted by law, provided they do so as individuals and not as representatives of the Company. Certain personal political contributions of employees and family members are prohibited or restricted under Company policy in order to comply with federal, state and local “pay-to-play” laws pertaining to contributions by vendors to the public sector.

Prudential prohibits individual political contributions for the purpose of influencing or attempting to influence the award of business to the company.

In accordance with federal, state, and local campaign finance laws, Prudential may provide corporate political contributions to state political party committees or other political committees excluding candidate committees. Prudential will not contribute financial or other support to United States political parties, committees, or candidates for public office or support other organizations except where approved by the Head of External Affairs in consultation with the Law Department. All direct corporate contributions will be included in this annual report.

Prudential may also contribute to issue advocacy groups including 501(c)4 organizations as well as 527 groups or super PACs in accordance with all federal, state, and local campaign finance laws. Such contributions of \$10,000 or more must be approved by the Head of External Affairs in consultation with the Law Department and will be disclosed in this annual report.

Prudential sponsors PACs to which eligible employees working in the United States may contribute. Such contributions are strictly voluntary, and the Company and its management will not penalize anyone for electing not to participate.

Political contributions made by Prudential PACs provide a voice for Prudential employees so that they may participate in the American democratic process. Prudential’s PACs support candidates from both major political parties who share Prudential’s vision and values of protecting the retirement, savings, investment and insurance needs of all Americans.

Summary of Prudential Policies and Procedures for Political Activity



Political contribution determinations are made by the Prudential Financial, Inc. Federal Political Action Committee and Prudential Financial Inc. State and Federal Political Action Committee Boards of Directors in consultation with Prudential's External Affairs Department and are executed by the Director and Treasurer of the Prudential PACs.

A complete membership listing of the Prudential PACs Boards is included on pages 6 and 7. Each board meets once per year at a minimum. The PAC Director, Treasurer and Boards of Directors are responsible for, respectively, managing and administering all Prudential PACs, including making final decisions as to political contributions and related activities of the PACs.

The External Affairs Department works closely with the Legal and Compliance Departments to ensure that Prudential's internal policies and procedures relating to U.S. political activities are strictly maintained. In addition, a review of the Prudential PACs is conducted every five years by an independent function. Prudential and Prudential's PACs file reports and disclose political contributions and lobbying expenditures to the public through the means prescribed by state and federal governmental authorities.

In their dealings with public officials and government employees, all Prudential employees are required to comply with Prudential's policies on political activities, lobbying and gifts and entertainment, including tracking and reporting activities and related expenses involving dealings with public officials and employees. Prudential lobbyists also are required to comply with relevant laws and behave in a manner that meets generally accepted standards of conduct of the profession.

Federal PAC Board of Directors



BOARD

Naveen Agarwal
Senior Vice President
Marketing

Yanela Frias
Senior Vice President
Retirement

David Hunt
Senior Vice President
PGIM

Venkata Natarajan
Vice President
Technology

Dylan Tyson
Senior Vice President
Annuities

Candace Woods
Senior Vice President
Actuarial

Caroline Feeney
Senior Vice President
Individual Solutions Group

Salene Hitchcock-Gear
Senior Vice President
ILI & Prudential Advisors

John “Jamie” Kalamarides
Senior Vice President
Group Insurance

Roger Putnam
Vice President
Enabling Solutions

Phil Waldeck
Senior Vice President
Chief Transformation Office

OFFICERS

Robert Falzon
PAC Chair
Vice Chair
Executive Office

Ann Kappler
PAC Vice Chair
SVP, Deputy General Counsel &
Head of External Affairs

ADMINISTRATION

Roman Gabriel
PAC Treasurer
Vice President, External Affairs

Jill Johnson
PAC Director
Director, External Affairs

John Feeney
Assistant PAC Treasurer
Vice President, External Affairs

State & Federal PAC Board of Directors



BOARD

Lucien Alziari

EVP & Chief HR Officer
Human Resources

Lauren Day

Vice President
Communications

Richard Hummers

Senior Vice President
Global Enterprise Services

Mark Finkelstein

Senior Vice President
Finance

Lata Reddy

Senior Vice President
Diversity, Inclusion & Impact

Timothy Schmidt

Senior Vice President
Investments

Nicholas Silitch

Senior Vice President
Risk Management

OFFICERS

Ann Kappler

PAC Chair
SVP, Deputy General Counsel
& Head of External Affairs

Michael McCann

PAC Vice Chair
Vice President
External Affairs

ADMINISTRATION

Roman Gabriel

PAC Treasurer
Vice President, External Affairs

John Feeney

Assistant PAC Treasurer
Vice President, External Affairs

Jill Johnson

PAC Director
Director, External Affairs

Prudential PACs Federal Contributions



State	Candidate			Party	Amount
Alabama					
	Sen.	Doug	Jones	DEM	\$3,000
	Rep.	Terri	Sewell	DEM	\$2,500
Arkansas					
	Sen.	Thomas	Cotton	REP	\$2,500
	Rep.	J. French	Hill	REP	\$2,500
Arizona					
	Sen.	Martha	McSally	REP	\$5,000
	Rep.	Tom	O'Halleran	DEM	\$1,000
	Sen.	Krysten	Sinema	DEM	\$2,500
California					
	Rep.	Peter	Aguilar	DEM	\$5,000
	Rep.	Tony	Cardenas	DEM	\$2,000
	Rep.	Judy	Chu	DEM	\$2,500
	Rep.	J. Luis	Correa	DEM	\$1,000
	Rep.	Jimmy	Gomez	DEM	\$3,500
	Rep.	James	Panetta	DEM	\$2,500
	Rep.	Linda	Sanchez	DEM	\$5,000
	Rep.	Bradley	Sherman	DEM	\$2,500
	Rep.	Michael	Thompson	DEM	\$5,000
	Rep.	Juan	Vargas	DEM	\$2,500
	Rep.	Maxine	Waters	DEM	\$5,000
Colorado					
	Sen.	Cory	Gardner	DEM	\$2,500
	Rep.	Edwin George	Perlmutter	DEM	\$5,000
	Rep.	Scott	Tipton	REP	\$2,500
Connecticut					
	Rep.	Jahana	Hayes	DEM	\$1,000
	Rep.	James	Himes	DEM	\$2,500
	Rep.	John	Larson	DEM	\$5,000

Prudential PACs Federal Contributions



State	Candidate			Party	Amount
Florida					
	Rep.	Vernon	Buchanan	REP	\$2,500
	Rep.	Stephanie	Murphy	DEM	\$5,000
	Rep.	Frederica	Wilson	DEM	\$1,000
Georgia					
	Rep.	Drew	Ferguson	REP	\$2,500
	Rep.	Tom	Graves	REP	\$2,500
	Rep.	John	Lewis	DEM	\$2,500
	Sen.	David	Perdue	REP	\$2,500
	Rep.	David	Scott	DEM	\$2,500
Illinois					
	Rep.	Rodney	Davis	DEM	\$5,000
	Rep.	Bill	Foster	DEM	\$5,000
	Rep.	Darin	LaHood	REP	\$5,000
	Rep.	Bradley	Schneider	DEM	\$2,500
Indiana					
	Rep.	Trey	Hollingsworth	REP	\$2,500
	Rep.	Jacqueline	Walorski	REP	\$5,000
Iowa					
	Sen.	Joni Kay	Ernst	REP	\$2,500
	Sen.	Charles	Grassley	REP	\$5,000
Kansas					
	Rep.	Ron	Estes	REP	\$2,500
Kentucky					
	Rep.	Garland	Barr	REP	\$5,000
	Rep.	Brett	Guthrie	REP	\$1,000
	Rep.	John	Yarmuth	DEM	\$2,500

Prudential PACs Federal Contributions



State	Candidate			Party	Amount
Louisiana					
	Sen.	William	Cassidy	REP	\$2,500
	Rep.	Garret	Graves	REP	\$2,500
Maryland					
	Rep.	Steny	Hoyer	DEM	\$2,500
Massachusetts					
	Rep.	Richard	Neal	DEM	\$2,500
Michigan					
	Rep.	Andy	Levin	DEM	\$1,000
	Sen.	Gary	Peters	DEM	\$3,000
	Rep.	Haley	Stevens	DEM	\$3,000
	Rep.	Timothy	Walberg	REP	\$5,000
Minnesota					
	Sen.	Tina	Smith	DEM	\$2,000
	Rep.	Pete	Stauber	REP	\$2,500
Missouri					
	Rep.	William	Clay	DEM	\$2,500
	Rep.	Emanuel	Cleaver	DEM	\$5,000
	Rep.	W. Blaine	Luetkemeyer	REP	\$5,000
	Rep.	Jason	Smith	REP	\$5,000
	Rep.	Ann	Wagner	REP	\$5,000
Montana					
	Sen.	Steve	Daines	REP	\$2,000
	Sen.	Jon	Tester	DEM	\$2,500
Nebraska					
	Sen.	Benjamin	Sasse	REP	\$3,000
	Rep.	Adrian	Smith	REP	\$3,000
Nevada					
	Rep.	Steven	Horsford	DEM	\$3,500

Prudential PACs Federal Contributions



State	Candidate			Party	Amount
New Jersey					
	Rep.	Josh	Gottheimer	DEM	\$5,000
	Rep.	Donald	Norcross	DEM	\$6,000
	Rep.	Frank	Pallone	DEM	\$2,500
	Rep.	Donald	Payne Jr.	DEM	\$5,000
	Rep.	Bill	Pascrell	DEM	\$5,000
	Rep.	Mikie	Sherrill	DEM	\$5,000
	Rep.	Jeff	Van Drew	REP	\$1,000
New Mexico					
	Rep.	Ben	Lujan	DEM	\$2,500
New York					
	Rep.	Brian	Higgins	DEM	\$2,500
	Rep.	Hakeem	Jeffries	DEM	\$2,500
	Rep.	Carolyn	Maloney	DEM	\$5,000
	Rep.	Gregory	Meeks	DEM	\$2,500
	Rep.	Joseph	Morelle	DEM	\$2,500
	Rep.	Thomas	Reed, II	REP	\$4,500
	Rep.	Kathleen	Rice	DEM	\$2,500
	Rep.	Thomas	Suozzi	DEM	\$2,000
	Rep.	Lee	Zeldin	REP	\$2,250
North Carolina					
	Rep.	Richard	Hudson	REP	\$2,500
	Rep.	Patrick	McHenry	REP	\$5,000
	Sen.	Thomas	Tillis	REP	\$2,500
North Dakota					
	Rep.	Kelly	Armstrong	REP	\$1,000
	Sen.	Kevin	Cramer	REP	\$2,500

Prudential PACs Federal Contributions



State	Candidate			Party	Amount
Ohio					
	Rep.	Troy	Balderson	REP	\$2,500
	Rep.	Joyce	Beatty	DEM	\$5,000
	Sen.	Sherrod	Brown	DEM	\$4,500
	Rep.	Warren	Davidson	REP	\$1,000
	Rep.	Marcia	Fudge	DEM	\$2,500
	Rep.	Anthony	Gonzalez	REP	\$5,000
	Rep.	Steve	Stivers	REP	\$5,000
	Rep.	Brad	Wenstrup	REP	\$2,500
Oklahoma					
	Rep.	Frank	Lucas	REP	\$1,500
Oregon					
	Rep.	Earl	Blumenauer	DEM	\$2,500
	Rep.	Suzanne	Bonamici	DEM	\$1,000
	Rep.	Kurt	Schrader	DEM	\$2,500
Pennsylvania					
	Rep.	Brendan	Boyle	DEM	\$5,000
	Rep.	Matthew	Cartwright	DEM	\$2,000
	Rep.	Dwight	Evans	DEM	\$2,500
	Rep.	G. Mike	Kelly	REP	\$3,500
	Rep.	Daniel	Meuser	DEM	\$1,000
	Rep.	Guy	Reschenthaler	REP	\$1,000
	Rep.	Keith	Rothfus	REP	\$2,500
	Rep.	Susan	Wild	DEM	\$1,000
South Carolina					
	Rep.	Tom	Rice	REP	\$5,000
	Sen.	Timothy	Scott	REP	\$4,000
	Rep.	William	Timmons, IV	REP	\$2,500

Prudential PACs Federal Contributions



State	Candidate			Party	Amount
South Dakota					
	Rep.	Dusty	Johnson	REP	\$1,000
Tennessee					
	Rep.	David	Kustoff	REP	\$1,000
	Rep.	John	Rose	REP	\$1,000
Texas					
	Rep.	Jodey	Arrington	REP	\$2,500
	Rep.	Sylvia	Garcia	REP	\$2,500
	Rep.	Vincente	Gonzalez	DEM	\$1,000
	Rep.	Lance	Gooden	REP	\$2,500
	Rep.	Kenny	Marchant	REP	\$1,500
	Rep.	Vancampen	Taylor	REP	\$1,000
	Rep.	Roger	Williams	REP	\$2,000
Virginia					
	Rep.	Denver	Riggleman, III	REP	\$4,500
	Rep.	Robert	Scott	DEM	\$1,000
	Rep.	Jennifer	Wexton	DEM	\$1,000
Washington					
	Rep.	Suzan	DelBene	DEM	\$3,000
	Rep.	Derek	Kilmer	DEM	\$3,000
	Rep.	Derek	Kilmer	DEM	\$1,000
West Virginia					
	Sen.	Shelley	Capito	REP	\$2,500
	Rep.	Alexander	Mooney	REP	\$1,000
Wisconsin					
	Rep.	Michael	Gallagher	REP	\$2,500
	Rep.	Ronald	Kind	DEM	\$5,000
	Rep.	Bryan	Steil	REP	\$3,500

Prudential PAC State Contributions



State	Candidate			Party	Amount
Arizona					
	State Sen.	Lela	Alston	DEM	\$1,000
	State Sen.	Paul	Boyer	REP	\$1,000
	State Sen.	Sean	Bowie	DEM	\$1,000
	State Sen.	Kate	Brophy McGee	REP	\$1,000
	State Sen.	Heather	Carter	REP	\$1,500
	State Sen.	Lupe	Contreras	DEM	\$1,000
	State Sen.	Karen	Fann	REP	\$2,000
	State Sen.	Venden	Leach	REP	\$1,000
	State Sen.	David	Livingston	REP	\$2,000
	State Rep.	Leo	Biasiucci	REP	\$1,000
	State Rep.	Russell	Bowers	REP	\$2,000
	State Rep.	Kelli	Butler	DEM	\$1,000
	State Rep.	Cesar	Chavez	DEM	\$1,000
	State Rep.	Mitzi	Epstein	DEM	\$1,000
	State Rep.	Charlene	Fernandez	DEM	\$1,000
	State Rep.	Randall	Friese	DEM	\$1,000
	State Rep.	Travis	Grantham	REP	\$1,000
	State Rep.	Anthony	Kern	REP	\$1,000
	State Rep.	Javan	Mesnard	REP	\$1,200
	State Rep.	Robert	Meza	DEM	\$1,000
	State Rep.	Joanne	Osborne	REP	\$2,000
	State Rep.	Bret	Roberts	REP	\$1,000
	State Rep.	Jeff	Weninger	REP	\$1,200

Prudential PAC State Contributions



State	Candidate			Party	Amount
California					
	State Sen.	Bill	Dodd	DEM	\$2,000
	State Sen.	Susan	Rubio	DEM	\$1,500
	State Assm.	Tom	Daly	DEM	\$1,500
Florida					
	State Sen.	Douglas	Broxson	REP	\$2,500
Illinois					
	State Sen.	William	Brady	REP	\$1,000
	State Sen.	William	Cunningham	DEM	\$500
	State Sen.	Napoleon	Harris, III	DEM	\$500
	State Sen.	Steven	Landek	DEM	\$500
	State Sen.	Antonio	Munoz	DEM	\$500
	State Rep.	Anthony	DeLuca	DEM	\$500
	State Rep.	Norine	Hammond	REP	\$500
	State Rep.	Thaddeus	Jones	DEM	\$500
	State Rep.	Michael	Unes	REP	\$500
Indiana					
	Governor	Eric	Holcomb	REP	\$500
	State Sen.	Eric	Bassler	REP	\$750
	State Sen.	Timothy	Lanane	DEM	\$350
	State Rep.	Terri	Austin	DEM	\$150
	State Rep.	Martin	Carbaugh	REP	\$750
	State Rep.	Matthew	Lehman	REP	\$500
Michigan					
	State Sen.	Tom	Barrett	REP	\$250
	State Sen.	Curtis	Hertel, Jr.	DEM	\$250
	State Sen.	Kenneth	Horn	REP	\$250
	State Sen.	Kim	LaSata	REP	\$250
	State Sen.	Lana	Theis	REP	\$250

Prudential PAC State Contributions



State	Candidate			Party	Amount
Michigan					
	State Rep.	Pamela	Hornberger	REP	\$250
	State Rep.	Bronna	Kahle	REP	\$150
	State Rep.	Daire	Rendon	REP	\$500
	State Rep.	Jason	Sheppard	REP	\$250
	State Rep.	Scott	VanSingel	REP	\$150
	State Rep.	Jason	Wentworth	REP	\$150
	State Rep.	Douglas	Wozniak	REP	\$150
Ohio					
	State Sen.	Hearcel	Craig	DEM	\$350
	State Sen.	Matthew	Dolan	REP	\$350
	State Sen.	Robert	Hackett	REP	\$1,000
	State Sen.	Jay	Hottinger	REP	\$350
	State Sen.	Larry	Obhof	REP	\$400
	State Sen.	Sandra	Williams	DEM	\$350
	State Rep.	Kristin	Boggs	DEM	\$300
	State Rep.	Thomas	Brinkman, Jr.	REP	\$1,000
	State Rep.	Richard	Brown	DEM	\$250
	State Rep.	Larry	Householder	REP	\$400
	State Rep.	George	Lang	REP	\$250
Pennsylvania					
	State Sen.	John	Gordner	REP	\$1,000
	State Sen.	Joe	Pittman	REP	\$1,000
	State Sen.	Joseph	Scarnati	REP	\$1,000
	State Sen.	Mario	Scavello	REP	\$1,000
	State Sen.	Sharif	Street	DEM	\$1,000
	State Rep.	Aaron	Bernstein	REP	\$250
	State Rep.	Matthew	Bradford	DEM	\$500

Prudential PAC State Contributions



State	Candidate			Party	Amount
Pennsylvania					
	State Rep.	Bryan	Cutler	REP	\$1,000
	State Rep.	Anthony	DeLuca	DEM	\$500
	State Rep.	Frank	Dermody	DEM	\$500
	State Rep.	Jordan	Harris	DEM	\$500
	State Rep.	Robert	Kauffman	REP	\$1,000
	State Rep.	Eric	Nelson	REP	\$250
	State Rep.	Michael	Peifer	REP	\$500
	State Rep.	Tina	Pickett	REP	\$1,000
	State Rep.	Stanley	Saylor	REP	\$500
	State Rep.	Michael	Tobash	REP	\$500
	State Rep.	Michael	Turzai	REP	\$1,000
	State Rep.	Jake	Wheatley	DEM	\$500
Texas					
	State Sen.	Dawn	Buckingham	REP	\$1,000
	State Sen.	Donna	Campbell	REP	\$1,000
	State Sen.	Kelly	Hancock	REP	\$1,500
	State Sen.	Edward	Lucio	DEM	\$1,000
	State Sen.	Jose	Menendez	DEM	\$1,000
	State Sen.	Kirk	Watson	DEM	\$1,000
	State Sen.	Judith	Zaffirini	DEM	\$1,000
	State Rep.	Rafael	Anchia	DEM	\$500
	State Rep.	Cesar	Blanco	DEM	\$1,000
	State Rep.	Greg	Bonnen	REP	\$500
	State Rep.	John	Bucy III	REP	\$500
	State Rep.	Sarah	Davis	REP	\$500
	State Rep.	John	Frullo	REP	\$500
	State Rep.	Vikki	Goodwin	DEM	\$500
	State Rep.	Julie	Johnson	DEM	\$500

Prudential PAC State Contributions



State	Candidate			Party	Amount
Texas					
	State Rep.	Stan	Lambert	REP	\$500
	State Rep.	Trey	Martinez Fischer	DEM	\$500
	State Rep.	Joseph	Moody	DEM	\$1,000
	State Rep.	Tom	Oliverson	REP	\$1,000
	State Rep.	Dennis	Paul	REP	\$500
	State Rep.	John	Smithee	REP	\$1,000
	State Rep.	Senfronia	Thompson	DEM	\$500
	State Rep.	Chris	Turner	DEM	\$1,000
	State Rep.	Hubert	Vo	DEM	\$500

Prudential PAC Contributions to PACs



U.S. Senate – Leadership PACs

Committee	Candidate		Party	State	Amount
21st Century Majority Fund	Sen. Johnny	Isakson	REP	GA	\$5,000
Alamo PAC	Sen. John	Cornyn	REP	TX	\$5,000
Bluegrass PAC	Sen. Mitch	McConnell	REP	KY	\$5,000
Citizens for Prosperity in America Today PAC	Sen. Patrick	Toomey	REP	PA	\$5,000
Common Values PAC	Sen. John	Barrasso	REP	WY	\$5,000
Defend America PAC	Sen. Richard	Shelby	REP	AL	\$5,000
Forward Together PAC	Sen. Mark	Warner	DEM	VA	\$5,000
Freedom Fund	Sen. Michael	Crapo	REP	ID	\$5,000
Heartland Values PAC	Sen. John	Thune	REP	SD	\$5,000
LEGPAC	Sen. Ben	Cardin	DEM	MD	\$2,500
Making Business Excel PAC	Sen. Michael	Enzi	REP	WY	\$2,500
New Millennium PAC	Sen. Robert	Menendez	DEM	NJ	\$5,000
Next Century Fund	Sen. Richard	Burr	REP	NC	\$4,000
Promoting Our Republican Team PAC	Sen. Rob	Portman	REP	OH	\$5,000
Rely on Your Beliefs Fund	Sen. Roy Dean	Blunt	REP	MO	\$5,000
The Hawkeye PAC	Sen. Charles	Grassley	REP	IA	\$5,000
The Peter Norbeck Leadership PAC	Sen. Michael	Rounds	REP	SD	\$5,000
Together Holding Our Majority PAC	Sen. Thomas	Tillis	REP	NC	\$2,500
Tomorrow is Meaningful PAC	Sen. Tim	Scott	REP	SC	\$1,000

Prudential PAC Contributions to PACs



U.S. House – Leadership PACs

Committee	Candidate		Party	State	Amount
AMERIPAC: The Fund for a Greater America	Rep. Steny	Hoyer	DEM	MD	\$5,000
BADGERPAC	Rep. Ron	Kind	DEM	WI	\$5,000
Building America's Republican Representation PAC	Rep. Garland	Barr IV	REP	KY	\$5,000
Building Relationships in Diverse Geographic Environments PAC	Rep. James	Clyburn	DEM	SC	\$5,000
CMR PAC	Rep. Cathy	Rodgers	DEM	WA	\$2,500
CONSERVATIVE ROUNDTABLE	Rep. George	Holding	REP	NC	\$2,500
Democrats Reshaping America (DREAMPAC)	Rep. Linda	Sanchez	DEM	CA	\$2,500
Electing Majority Making Effective Republicans	Rep. Thomas	Emmer, Jr.	REP	MN	\$5,000
Giving Willingly Empower Nationally (GWEN) PAC	Rep. Gwen	Moore	DEM	WI	\$5,000
Innovation PAC	Rep. Patrick	McHenry	REP	NC	\$5,000
Jersey Values PAC	Rep. Joshua	Gottheimer	DEM	NJ	\$2,500
Jobs and Innovation Matter PAC	Rep. James	Himes	DEM	CT	\$2,500
Majority Committee PAC	Rep. Kevin	McCarthy	REP	CA	\$5,000
Making America Prosperous PAC	Rep. Kevin	Brady	REP	TX	\$5,000
New PAC	Rep. Devin	Nunes	REP	CA	\$5,000
Silk PAC	Rep. William	Pascrell, Jr.	DEM	NJ	\$5,000
Synergy PAC	Rep. John	Larson	DEM	CT	\$5,000

U.S. House – Leadership PACs

Committee	Candidate		Party	State	Amount
The Eye of the Tiger PAC	Rep. Stephen	Scalise	REP	LA	\$2,500
The Madison PAC	Rep. Richard	Neal	DEM	MA	\$5,000
Upper Hand Fund	Rep. William	Huizenga	REP	MI	\$3,500
Victory in November Election PAC	Rep. Michael	Thompson	DEM	CA	\$2,500

Other Political Committees

Committee	Party	State	Amount
Blue Dog Political Action Committee	DEM		\$5,000
Committee for Hispanic Causes/Building Our Leadership Diversity PAC (CHC BOLD PAC)	DEM		\$5,000
Congressional Black Caucus PAC	DEM		\$5,000
Indiana House Democratic Caucus	DEM	IN	\$500
Indiana House Republican Campaign Committee	REP	IN	\$500
Indiana Senate Democrat Committee	DEM	IN	\$500
Indiana Senate Majority Campaign Committee	REP	IN	\$500
New Democrat Coalition PAC	DEM		\$5,000

Annual dues, assessments and contributions of \$10,000 or more to trade associations and tax-exempt groups

ORGANIZATION*	LOBBYING (\$) **	TOTAL DUES
AG Alliance (CWAG)	-	\$25,000.00
American Benefits Council	\$9,780.00	\$53,000.00
American Council of Life Insurers	\$304,149.99	\$2,004,500.00
American Seniors Housing Association	\$1250.00	\$12,500.00
Arizona Chamber of Commerce & Industry	\$822.50	\$11,350.00
Association for Advanced Life Underwriting (AALU)	\$7,713.75	\$13,342.00
Association for Competitive Taxation (ACT)	\$45,000.00	\$45,000.00
Association of California Life & Health Insurance Companies	\$7,020.00	\$117,000.00
Association of Ohio Life Insurance Companies	\$8,000.00	\$16,000.00
Bermuda International Long-Term Insurers and Reinsurers	-	\$14,875.00
Bipartisan Policy Center	-	\$100,000.00
Borderplex Bi-national Economic Alliance	-	\$15,000.00
Business Forward, Inc.	\$1,000.00	\$10,000.00
Business Innovation Technology Security	-	\$115,000.00
California Chamber of Commerce	\$4,500.00	\$18,000.00
Center for Advanced Human Resource Studies (CAHRS)	-	\$20,000.00
Center for Workplace Compliance	-	\$15,150.00
Center on Executive Compensation	\$12,000.00	\$20,000.00
Coalition Against Insurance Fraud*	-	\$15,900.00
Conference Board Inc.	-	\$146,850.00
Council of Institutional Investors	-	\$20,444.00
CRE Finance Council	\$12,000.00	\$30,000.00
Democratic Attorneys General Association	\$25,000.00	\$25,000.00
Democratic Governors Association	-	\$50,000.00
District of Columbia Insurance Federation (DCIF)	\$5,239.25	\$20,957.00
Emerging Markets Trade Association	-	\$25,000.00
ERISA Industry Committee	-	\$29,000.00
Ethics & Compliance Officer Association	-	\$25,000.00
Financial Services Information Sharing and Analysis Center	-	\$54,945.00

Annual dues, assessments and contributions of \$10,000 or more to trade associations and tax-exempt groups

ORGANIZATION*	LOBBYING (\$) **	TOTAL DUES
Financial Systemic Analysis and Resilience Center LLC	-	\$472,505.00
Florida Insurance Council, Inc.	\$30,447.01	\$62,959.07
Florida TaxWatch	-	\$10,000.00
Geneva Association	-	\$78,477.60
HR Policy Association	\$9,000.00	\$15,000.00
Illinois Life Insurance Council	\$8,970.00	\$29,900.00
Institute for Responsible Housing Preservation	\$1,500.00	\$15,000.00
Institute of International Finance, Inc.	-	\$75,000.00
Institutional Investor LLC	-	\$53,000.00
Insurance Association of Connecticut	\$6,750.00	\$27,000.00
Insurance Federation of Pennsylvania	\$14,332.60	\$71,663.00
Insured Retirement Institute	\$14,775.00	\$198,500.00
Integrated Benefits Institute	-	\$50,000.00
Investment Company Institute (ICI)	-	\$1,034,702.88
KnowledgeConnect LLC	-	\$14,000.00
Life Insurance and Market Research Assn. (LIMRA)	-	\$681,889.00
Life Insurance Association of Massachusetts	\$6,945.84	\$19,800.00
Life Insurance Association of Michigan	\$1,545.00	\$15,000.00
Life Insurance Council of New York, Inc. (LICONY)	\$20,250.00	\$75,000.00
Massachusetts Institute of Technology Industrial Liaison Program	-	\$75,000.00
Metro Hartford Alliance	\$581.74	\$34,220.00
Minnesota Insurance and Financial Services (MIFSC)	\$11,550.00	\$15,000.00
Mortgage Bankers Association	\$1,188.45	\$11,884.50
National Business Group on Health	-	\$29,000.00
National Governors Association Center for Best Practices	-	\$30,000.00
National Housing & Rehabilitation Association	-	\$15,000.00
National Minority Supplier Development Council Inc.	-	\$38,000.00
National MultiFamily Housing Council	\$14,750.00	\$40,000.00
National Structured Settlement Trade Association	\$4,950.00	\$55,000.00
New Jersey State Chamber of Commerce	\$10,590.00	\$70,600.00

Annual dues, assessments and contributions of \$10,000 or more to trade associations and tax-exempt groups

ORGANIZATION*	LOBBYING (\$) **	TOTAL DUES
North American CRO Council	\$2,400.00	\$16,000.00
Public Affairs Council*	-	\$12,900.00
Real Estate Roundtable	\$22,750.00	\$35,000.00
Republican Attorneys General Association	\$25,000.00	\$25,000.00
Republican Governors Association	-	\$50,000.00
Ripon Society	-	\$35,000.00
Securities Industry & Financial Markets Association	\$22,353.30	\$131,490.00
Stable Value Investment Association	\$2,400.00	\$24,000.00
Structured Finance Industry Group	\$650.00	\$10,000.00
Texas Association of Life & Health Insurers (TALHI)	\$4,160.40	\$27,736.00
United States Chamber of Commerce***	\$57,000.00	\$275,000.00
United States Institute for Legal Reform	\$40,000.00	\$100,000.00
Urban Land Institute	-	\$32,432.67
US India Strategic Partnership Inc.	\$6,000.00	\$20,000.00
Women's Business Enterprise National Council	-	\$26,000.00
World 50 Inc.	-	\$160,500.00

**Prudential belongs to various trade organizations that maintain a relevant focus on matters concerning our business interests. Organizations organized as I.R.C. 501(c)4 entities are denoted with an asterisk (*).*

***Non-deductible portion of dues computed pursuant to I.R.C. §162 (e) and Treas. Reg. §1.162.29.*

****Total United States Chamber of Commerce Dues includes: 2019 Annual Dues \$100,000; Center for Capital Markets Competitiveness \$100,000; US-Japan Business Council \$25,000; US-Korea Business Council \$10,000; 2019 Asia Sponsorship \$40,000.*